

# VistaEasy 5.16

EN  
US



## Installation and Operating Instructions

CE 0297

9000-618-137/29



 **DÜRR  
DENTAL**

2019/10/15



# Contents

<b>1 General</b>	4
1.1 Symbols used	4
1.2 Classification	4
1.3 Intended purpose	4
1.4 Indications for Use	4
1.5 Intended use	5
1.6 Improper use	5
1.7 Side effects	5
1.8 Safety	5
1.9 Notification requirement of serious incidents	5
1.10 Specialist personnel	6
1.11 Storage of the data storage media	6
1.12 Data backup before installation	6
1.13 Effect on the computer	6
1.14 Protection from threats from the Internet	6
1.15 Copyright information	6
1.16 End User Licensing Agreement (EULA)	6
1.17 System requirements	7
<b>2 Installation</b>	8
2.1 Data backup during updating	8
2.2 Performing the Installation	9
<b>3 Configuration</b>	10
3.1 Starting VistaConfig	10
3.2 Activating VistaEasyView	10
3.3 Configuring edge masking	10
3.4 Job settings	11
3.5 Closing VistaConfig	11
3.6 Using the TWAIN interface (source) in the third-party application	12
3.7 Using the VistaEasy interface in the third-party application	13
<b>4 Application</b>	14
4.1 Starting recording via third-party application	14
4.2 Importing an exposure (X-ray image)	16
4.3 Import recording (video image) with VistaCam / VistaProof	18
4.4 Viewing recordings in VistaEasyView	20
4.5 Editing recordings in VistaEasyView	22
4.6 Sending recordings from VistaEasyView to third-party applications	25
4.7 Closing VistaEasy	25
<b>5 VistaEasy Job Management</b>	26
5.1 Configuring job management	27
<b>6 Log management</b>	29
6.1 Viewing the log file	29
<b>7 Troubleshooting</b>	30
7.1 Transport	30
7.2 Troubleshooting	30

# 1 General

## 1.1 Symbols used



Warning

The signal word differentiates between four levels of danger:

**DANGER**

Immediate danger of severe injury or death

**WARNING**

Possible danger of severe injury or death

**CAUTION**

Risk of minor injuries

**NOTICE**

Risk of extensive material/property damage

Note, e.g. specific instructions regarding the efficient use of the unit.



Comply with the Operating Instructions.



CE mark with notified body number



Manufacturer



Medical device



Take note of the accompanying electronic documents

## 1.2 Classification

Medical device of class IIb

FDA Classification (CFR Title 21) II

## 1.3 Intended purpose

Recording and transfer of images created with the VistaRay, VistaScan and VistaCam imaging systems made by Dürr Dental. If necessary, these images can be examined and edited by the user via the VistaEasyView image screen interface prior to transfer to the third-party application. All changes are burned into the image and transferred to the third-party application requesting the recording(s) via an order. The third-party application is responsible for further administration and processing of the transferred image.

The transfer to the third-party application is carried out either via the standard TWAIN or the proprietary VistaEasy interface. The external program must meet the requirements of the VistaEasy interface specification to ensure reliable image transfer.

## 1.4 Indications for Use

DBSWIN and VistaEasy imaging software are intended for use by qualified dental professionals for windows based diagnostics. The software is a diagnostic aide for licensed radiologists, dentists and clinicians, who perform the actual diagnosis based on their training, qualification, and clinical experience. DBSWIN and VistaEasy are clinical software applications that receive images and data from various imaging sources (i.e., radiography devices and digital video capture devices) that are manufactured and distributed by Duerr Dental and Air Techniques. It is intended to acquire, display, edit (i.e., resize, adjust

contrast, etc.) and distribute images using standard PC hardware. In addition, DBSWIN enables the acquisition of still images from 3rd party TWAIN compliant imaging devices (e.g., generic image devices such as scanners) and the storage and printing of clinical exam data, while VistaEasy distributes the acquired images to 3rd party TWAIN compliant PACS systems for storage and printing. DBSWIN and VistaEasy software are not intended for mammography use.

## 1.5 Intended use

The software is intended for the viewing and diagnosis of image data in relation to dental issues. Its proper use is documented in the operating instructions of the corresponding image-generating systems. Image-generating systems that can be used with the software include optical video cameras, digital X-ray cameras, image plate scanners, extraoral X-ray units and optical light beam scanners.

The software must only be used by trained, qualified dental personnel (e.g. dentists, specialist consultants or other qualified personnel) for the following tasks:

- › Filter optimisation of the display of X-ray images for improved diagnosis
- › Acquisition, storage, management, display, analysis and editing of digital/digitised optical video recordings
- › Acquisition, storage, management, display, analysis, diagnosis and editing of digital/digitised X-ray images
- › Forwarding of images and additional data to external software (third-party software)

## 1.6 Improper use

The software must not be used for the following:

- › Performance of measurements on images that are not suitable for this purpose due to the way in which the images were created. The software does not provide a measuring function due to the unavoidable geometric image properties of X-ray images. Here, displayed values are only intended to serve as guide values. This also applies after use of the calibration function.
- › Use for contraindicated purposes for the image-generating system. The operating instructions of the image-generating system must be followed here.
- › Mammographic applications.

Any other usage or usage beyond this scope is deemed to be improper. The manufacturer accepts no liability for damages resulting from improper usage. In these cases the user/operator will bear the sole risk.

## 1.7 Side effects

At present, no side effects that might permanently impede the function of other programs are known.

## 1.8 Safety

Dürr Dental has developed the software in such a way that dangers are effectively ruled out if the software is used in accordance with its intended use.

Despite this, the following residual risks can remain:

- Personal injury due to incorrect use/misuse
- Personal injury due to malfunction

## 1.9 Notification requirement of serious incidents

The user / patient is required to report to the manufacturer and the competent authority of the Member State, in which the user and/or patient is established, any serious incident that has occurred in relation to the device.

## 1.10 Specialist personnel

Persons using the software must be able to guarantee safe and correct operation based on their training and experience.

- › Make sure every operator is trained in the use of the software.
- › All installation, resetting, alteration, extension and repair work must be carried out either by Dürr Dental personnel or by a suitably qualified person approved by Dürr Dental.

## 1.11 Storage of the data storage media

According to the manufacturer's instructions, protect from

- Direct exposure to magnetic radiation (permanent magnet or electromagnet)
- Temperature outside permitted range
- Humidity outside permitted range
- Damage (scratches, breakage, deformation, etc.)

## 1.12 Data backup before installation

Before installing the software, we recommend you perform a complete data backup for the software already installed on the computer. A regular system backup is vital! For instructions on how to proceed, contact your system administrator.

## 1.13 Effect on the computer

We do not assume liability for any effect on any software already installed on the computer.

## 1.14 Protection from threats from the Internet

The software runs on a computer that can be connected to the Internet. Therefore, the system needs to be protected from threats from the Internet.

- › Use antivirus software and update it regularly.
- › Look for evidence of possible virus infection and, if applicable, check with the antivirus software and remove the virus.
- › Update the computers operating system regularly.
- › Perform regular data backups.
- › Provide access to computers to authorised operators only, e.g. by means of user name and password.
- › Make sure that only trustworthy content is downloaded. Only install software and firmware updates that have been authenticated by the manufacturer.

## 1.15 Copyright information

All names of circuits, processes, names, software programs and units used in this document are protected by copyright.

The Installation and Operating Instructions must not be copied or reprinted, either in full or in part, without written authorization from Dürr Dental.

## 1.16 End User Licensing Agreement (EULA)

For the current End User Licensing Agreement (EULA), please refer to the DBSWIN installation process.

## 1.17 System requirements

### Hardware and software

The PC and its components (monitor, printer, etc.) must be set up according to IEC 60601-1 (EN60601-1) if they are operated within the vicinity of the patients (up to 1.5 m away from the patient examination area).

The safety requirements of the PC system may differ depending on the combination with other peripheral equipment (video camera, scanner, intraoral X-ray imaging system). Further information can be found in the user manuals or may be derived from the regulations valid for the country where the system is installed (e.g. MPG for Europe).

### PC



The following information merely states the computer system requirements. Even if the stated system requirements are met, correct operation of the Dürr Dental hardware/software can still be disrupted by specific hardware and software features on the customer side. In these cases, Dürr Dental assumes no liability for trouble-free operation of the Dürr Dental hardware/software. Additional systems being connected to the PC may change the system requirements. Comply with the system requirements of all connected systems.

CPU:	≥ Intel Pentium IV compatible, 1.4 GHz
RAM:	≥ 1 GB (2 GB recommended)
Operating systems:	Microsoft Windows 7 (Home Premium or higher), SP1 plus update KB3033929, recommended: KB2921916 Microsoft Windows 8.1 (not Windows RT) Microsoft Windows 10 (Pro or higher) Microsoft Windows Server 2016 Microsoft Windows Server 2019
Hard disk:	Workstation (without database) ≥ 50 GB The database memory requirements depend on the number of images taken at the surgery in question. (Camera image: approx. 1 MB, X-ray image: approx. 2 MB - 10 MB)
Drive:	DVD-ROM
Interface:	Ethernet ≥ 100 Mbit
Graphics board:	Resolution ≥ 1024 x 768 Depth of colour 32-bit, 16.7 million colors

## 2 Installation

### 2.1 Data backup during updating

EN  
US



**CAUTION**

Data backup is indispensable since any failure of the system can lead to a loss of data. It also protects you against loss of data due to incorrect operation or destruction (fire, water, ...) of the system.



**CAUTION Data loss**

All the data generated after the backup is no longer available after the backup has been restored.

- Before restoring the backup, ensure that the new data has been backed up separately.
- Import the new data of the backup restoration separately.

**Directories to be included in the backup**

The following directories need to be backed up:



The paths specified here refer to the standard installation of VistaEasy.

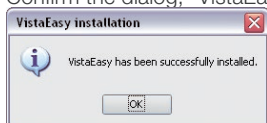
%ProgramFiles%\Duerr	Installation path
%COMMON_APPDATA%\Duerr	Shared data
%APPDATA%\Duerr	User data

We also recommend defining a system recovery point in the operating system.



## 2.2 Performing the Installation

- › Close all running programs.
- › Place the DBSWIN DVD-ROM into the DVD drive. The DVD menu starts automatically.  
If the window does not open automatically, select the DVD drive and start the "CD\_Start.exe" file.
- › Select the required installation language.
- › Click on the "Driver" tab.
- › Click on "VistaEasy Installation".
- › Click on "OK" in the following message.  
The installation can be discontinued by clicking on "Cancel".
- › Read the greetings text and confirm by clicking on "Next".
- › Read the End User Licensing Agreement (EULA) and place a checkmark in the "Accept" box if you agree with the contract conditions.
- › Confirm by clicking on "Next".
- › Check the path information, adjust if necessary.
- › Check the workstation name, adjust if necessary.
- › Start the installation by clicking on "Install".  
VistaEasy is being installed.
- › Confirm the dialog, "VistaEasy was installed successfully!", by clicking on "OK".



- › If a dialog is shown inquiring whether or not the computer should be restarted: Confirm the dialog by clicking on "Yes".



After installation, the service technician and the user must assess the image impressions. The filters may need to be adapted to further improve the image quality.

## 3 Configuration



### CAUTION

Risk of data loss due to incorrect configuration

Configuration must only be carried out either by Dürr Dental personnel or by a suitably qualified person approved by Dürr Dental.

### 3.1 Starting VistaConfig

To activate VistaEasyView, proceed as follows:

- › Depending on the installed unit and associated driver, start "VistaScanConfig", "VistaRayConfig", "VistaCamConfig" or "VistaNetConfig" via "Start/All programs/Dürr Dental/VistaConfig".

The "VistaConfig" program window opens.



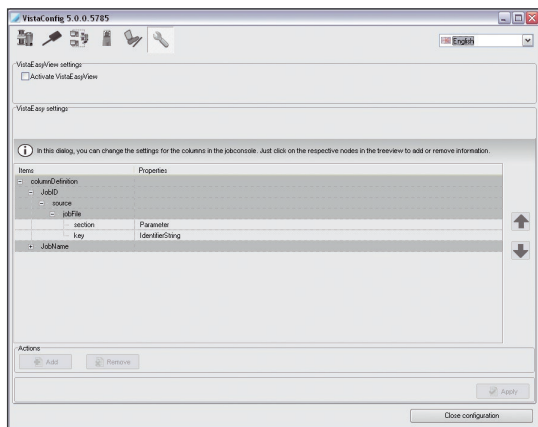
For information concerning the configuration of the individual units, please refer to the respective installation and operating instructions of the unit.

### 3.2 Activating VistaEasyView

Before you can use the VistaEasyView image of you interface, the interface needs to be activated.

If you do not activate VistaEasyView, the imported images are sent directly to the third-party application and you cannot view or edit the images in VistaEasyView.

- › Click on the "VistaEasy configuration" button.



- › Place a checkmark in the "VistaEasyView Settings" area in the "Activate VistaEasyView" checkbox.

### 3.3 Configuring edge masking

- › Select a gray value (value range: 0 to 65535) under "Edge masking" (must be enabled in scanning mode).

Edge masking adapts the white edge of an X-ray image - which is created during the import process - to the color of the light table. This aims to prevent dazzle in darkened rooms, thus making diagnostics of the X-ray image easier. Edge masking can be applied to all intra formats of VistaScan appliances.

- › Save the edge masking settings with .

The settings must be saved with this button since they are not accepted otherwise.

### 3.4 Job settings

- › Select the following under "Job settings":

<b>Scan mode selection</b>	as specified by job	When the third party software sends a scanning mode, the transferred scanning mode is used.
	Always manually	The scanning mode must always be selected manually.
	Last used	The scanning mode last used is selected automatically.
<b>For jobs with no definition of appliance type</b>	Last used	The unit last used is selected automatically.
	Always default unit	The unit selected under "Default unit" is selected.
	Show list of units	A list of available units is shown always.
<b>Default unit</b>	e.g. VistaScan, ....	A default unit can be selected which will then be used.

### 3.5 Closing VistaConfig

- › Click on the "Close configuration" button.
- › Confirm the "Save changes" message by clicking on "Yes", if applicable.  
This saves the configuration and closes the "VistaConfig" program.

### 3.6 Using the TWAIN interface (source) in the third-party application

Depending on the third-party application used, a TWAIN source is predefined for the device used or is selected directly when importing.

**TWAIN sources and associated device**

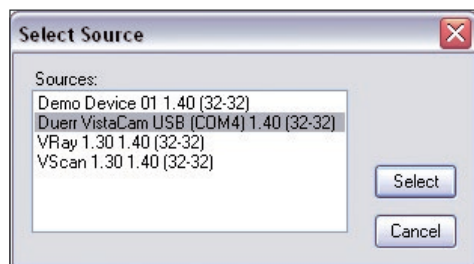
Device	TWAIN source
VistaScan / VistaScan Combi / VistaScan Plus / VistaScan Perio	VScan 1.40
VistaRay	VRay 1.40
VistaCam Digital / VistaCam Digital (with capture ring) / VistaProof / Vista Proof (with capture ring) / VistaCam CL.iX / VistaCam iX / VistaCam iX HD	TWAIN source is shown along with the individual name of the camera and the occupied COM port.
VistaScan Perio Net / VistaScan Mini	TWAIN source is shown along with the individual name of the scanner.

#### Predefining the TWAIN source

› Open the menu for the TWAIN source selection in the third-party application. Example:

File	Edit	Image	Options	View	Help
Open...				O	
Reopen				Shift+R	
Open with external editor					►
Open as					►
Thumbnails				T	
Slideshow...				W	
Batch Conversion/Rename...				B	
Search files...				Ctrl+F	
Rename File...				F2	
Move File...				F7	
Copy File...				F8	
Delete File...				Del	
Save (original folder)				Ctrl+S	
Save as...				S	
Save for Web... (PlugIn)					
Print...				Ctrl+P	
Select TWAIN Source...					
Acquire/Batch scanning...				Ctrl+Shift+A	

› Select and confirm a TWAIN source in the dialog. Example:

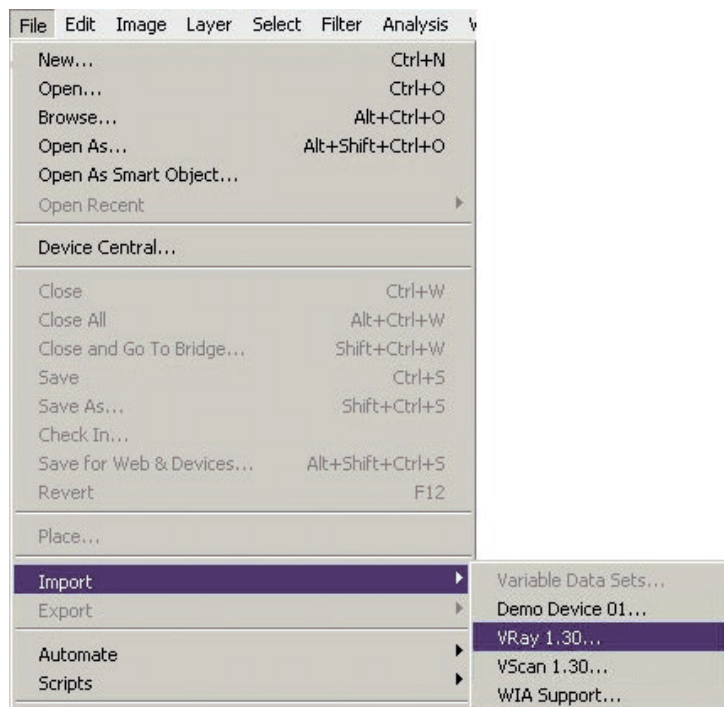


Now, you can start importing in the third-party application via the respective menu.

### Select the TWAIN source directly (when importing)

In this case, the selection of the TWAIN source starts the image data import process immediately.

› Open the menu for the TWAIN source selection in the third-party application. Example:




## 3.7 Using the VistaEasy interface in the third-party application

The VistaEasy interface may be supported depending on the third-party application being used. Inquire with the manufacturer of the third-party application or Dürr Dental to find out whether or not the third-party application supports the VistaEasy interface. If this is the case, the interface must be enabled via a defined button. This is detailed in the third-party application manual.

# 4 Application

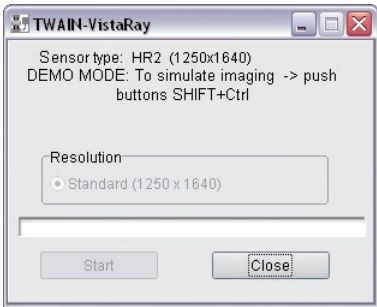
## 4.1 Starting recording via third-party application

 The application listed below is an example!  
Please consult the third-party application manual for information as to whether or not and how the TWAIN or VistaEasy interface is used in the third-party application.

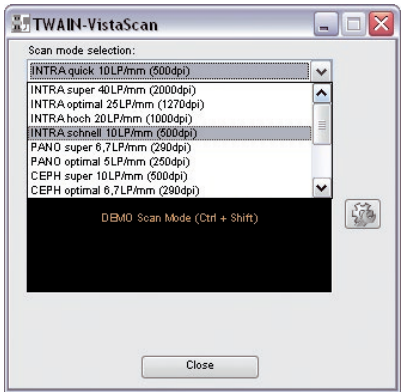
If no TWAIN source can be predefined in the third-party application, the TWAIN source is selected again with each import process (refer to chapter, "Configuration").

- Start the third-party application.
- Select the TWAIN source and start the TWAIN import.  
The device-specific preview window opens.

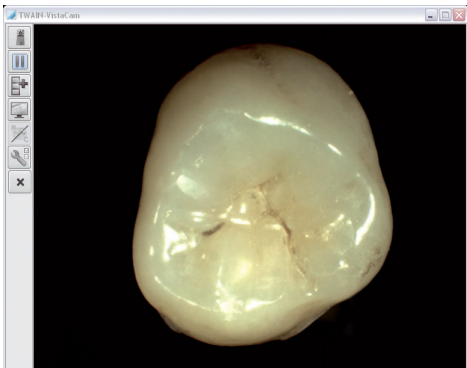
Preview window – Examples:



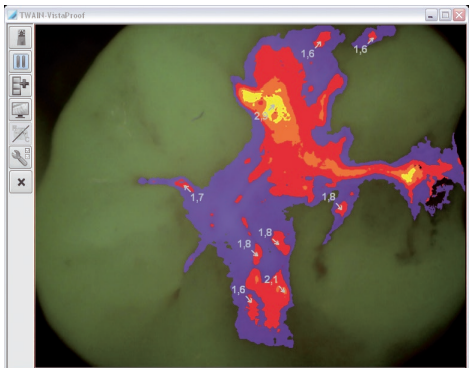
for VistaRay



for VistaScan



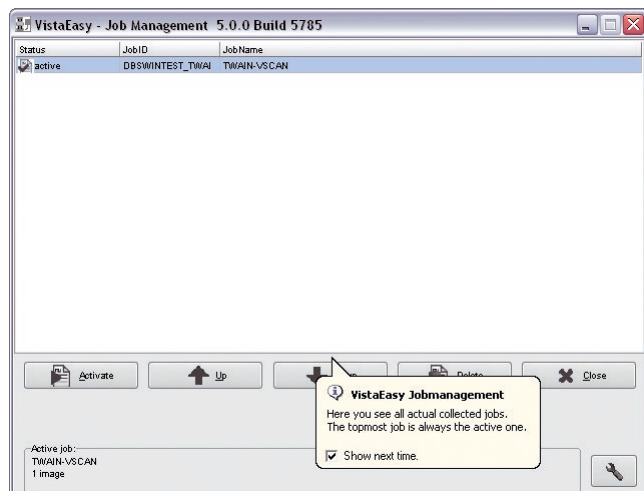
for VistaCam



for VistaProof

The started recording appears as a job in the VistaEasy job management.

### *VistaEasy-Job Management – Example (VistaScan)*



VistaEasy also creates an icon  in the task bar  next to the Windows clock. Double-clicking on this icon opens up the VistaEasy Job Management, which displays information on the current job.

For explanations on the VistaEasy job management: refer to chapter, "VistaEasy Job Management"

## 4.2 Importing an exposure (X-ray image)

### VistaRay

- › VistaRay: Click on "Start".


The recorded image is being imported. The progress bar in the preview window fills progressively.

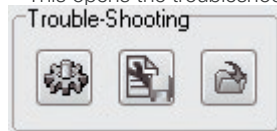
### VistaScan connected to a computer


- › VistaScan: Select the scan mode in the "Scan mode selection" list in the preview window.  
The scanner is being initialized.
- › Insert the image plate or cassette into the scanner.  
The image plate or cassette is being drawn in. The progress of the import process is shown in the preview window. After the import is completed, the device is ready for use again. The message "Scanner ready" is shown in the preview window.

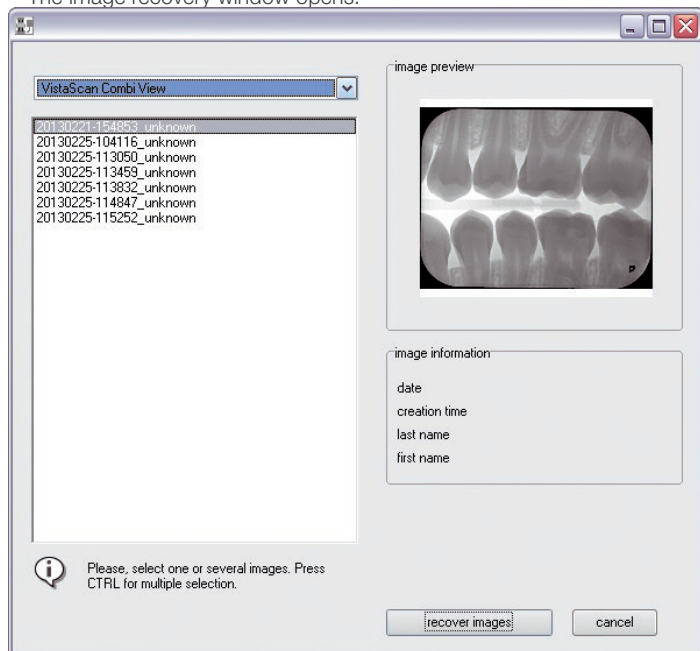
Depending on the configuration, the imported recording is loaded into the third-party application or in VistaEasyView and the preview window is closed. The VistaEasyView window is shown only if VistaEasyView is enabled in the configuration (refer to chapter, "Configuration").

### VistaScan in Stand-Alone operation

- › Click on the  button in the preview window.  
This opens the troubleshooting.

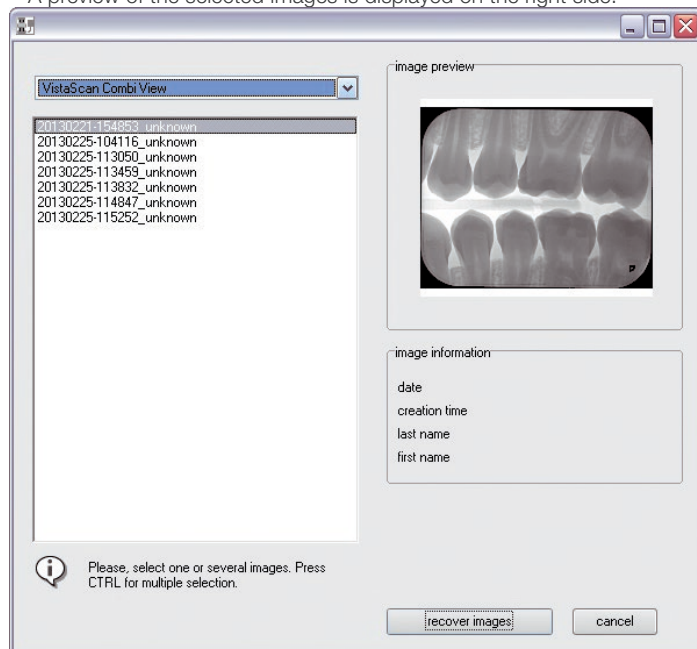


- › Click on the  button.  
The image recovery window opens.





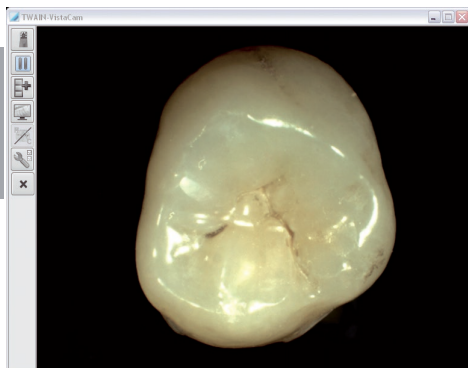
- › Under "Source", choose the entry of the desired scanner.  
All images on the unit are displayed in a list on the left side.  
A preview of the selected images is displayed on the right side.



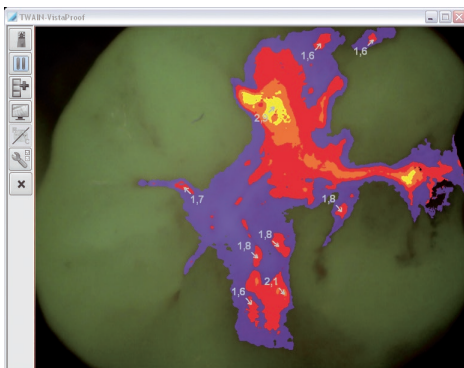
- › Mark those images in the list which should be transferred again.
- › Click on the "Transfer image(s)" button.  
The images look like a normal scan job again.

### 4.3 Import recording (video image) with VistaCam / VistaProof

The current video recording is shown in the preview window.



Preview window for VistaCam



Preview window for VistaProof

The following actions can be performed with the buttons:



Select video source. The video source used most recently is selected by default.



Camera is in Pause mode (still image).



Camera is in Live mode



Record single image. The transmission depends on the operating mode:

- in VistaConfig mode: The recording is shown in the image preview bar of VistaEasyView
- In VistaEasy mode: The recording is transferred directly to the third-party application. (with VistaEasyView enabled; refer to chapter, "Configuration")



Open full-screen mode



Select and apply prophylaxis/caries filter (only available with VistaProof)

The button is only active if a video image is displayed in pause mode (still image). The caries view is enabled by default.



Open camera configuration: "Video settings" and "Enable profile" (only possible with cameras having a capture ring)



Abort the recording and close the preview window

#### *Configure the camera*

› Click on the  button.

› Select "Video settings" in the context menu or activate the desired profile.

#### *Select video source*

› Click on the  button.

› Select the desired video source from the list of registered devices in the context menu.  
The current image of the video source (camera) is displayed in the preview window.

### ***Switch between Live mode and Pause mode***

- › If the camera is disabled (e.g. in the holder or in overheat protection) or is in pause mode:

Click on the  button.

This enables the camera and switches to Live mode.

- › If the camera is in Live mode:

Click on the  button.


The view switches to Pause mode. The image recorded most recently is shown as a still image.

This image can be imported and sent to VistaEasyView or the third-party application.

### ***Open and close full screen mode***

- › Click on the  button.

The video image is shown in full screen mode.

- › To close full screen mode, click on  in the full screen or open the context menu with the right mouse button and click on "Disable full screen mode".

The video image is shown in the program window of the preview window again.

### ***Abort recording***

- › Click on the  button.

The recording is deleted and cleared from the Job directory of the VistaEasy Job Management. The preview window is being closed.

### ***Import the video image***

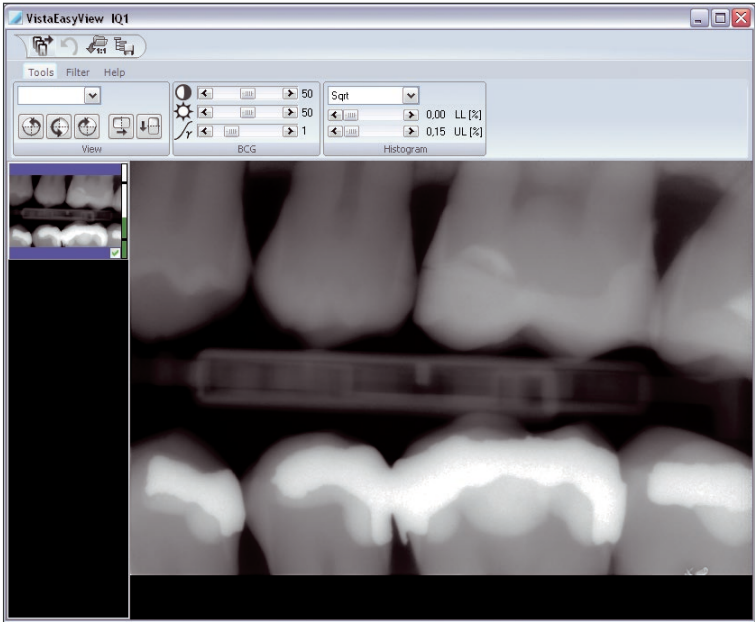
- › Click on the  button to import the recording.

Depending on the configuration, the imported recording is loaded into the third-party application or VistaEasyView. The VistaEasyView window appears only if VistaEasyView is enabled in the configuration (refer to chapter, "Configuration").

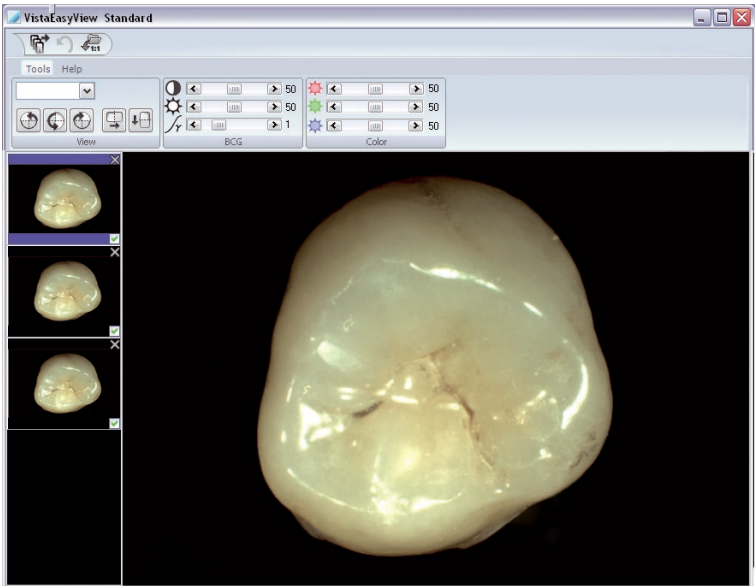
4.4 Viewing recordings in VistaEasyView

After transferring the recordings to VistaEasyView, one of the following views appears depending on the device used.

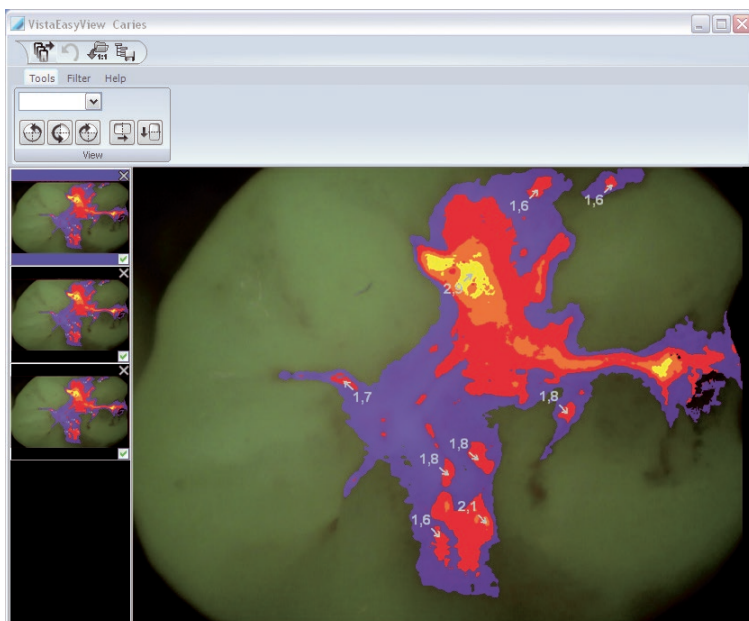
With VistaRay / VistaScan, the following view appears (example):



With VistaCam, the following view appears (example):



With VistaProof, the following view appears (example):



In VistaEasyView, you can edit the recordings and send them to the third-party application. The program interface is divided into various areas.

### Quick Access Toolbar



You can manage the imported recordings in the Quick Access Toolbar.



**Transfer images:**

Send the images that are marked with a checkmark to the third-party application.



**Undo:**

Undo the most recent editing step.



**Load original image:**

Loads the original status of the recording.



**Save mode configuration:**

Save settings (BCG values, filter and histogram-optimization) that were made.



### NOTICE

The settings that were made are saved directly in the mode. The saved changes are then always applied when this mode is used.

## Image preview bar

The loaded recordings are shown in miniature form in the image preview bar and can be marked for transfer.

With recordings with the VistaCam and VistaProof, individual recordings can also be deleted in the image preview bar.

### Delete recording (VistaCam, VistaProof)

› Click on  in the image preview bar next to the recording to be deleted.

This deletes the recording from the image preview bar.

The dosage equivalence values are also shown on the right, next to the individual recordings in the image preview bar. This value serves as a standard for the optimum settings of the dosage parameters. If the dosage parameters are set to the correct values, this is indicated by a green bar – if not, this is indicated by a red bar. There is a lower and upper critical limit here.

## 4.5 Editing recordings in VistaEasyView

### Tools and filters for editing the recordings

The tools and filters that are required for image editing are visible in VistaEasyView, depending on the device that is connected.

#### Tools – "View"



Increase / Decrease size:

A zoom factor can be chosen using the pull-down menu.



Rotate recording:

The recording can be turned by 90° to the left or right or by 180°.

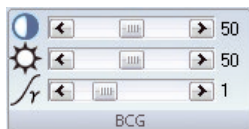


Mirror recording:

The recording can be flipped horizontally or vertically.

#### Tool – "BCG" (Brightness, Contrast, Gamma)

This tool is only visible for recordings made with VistaRay and VistaScan.



Contrast

The contrast of the recording can be adjusted with the slide control.



Brightness

The brightness of the recording can be adjusted with the slide control.

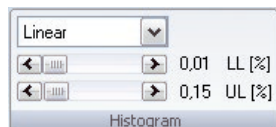


Gamma

The gamma values of the recording can be adjusted with the slide control.

### Tools – "Histogram"

This tool is only visible for recordings made with VistaRay and VistaScan.

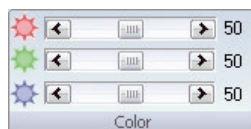


The histogram of gray values can be adjusted with the histogram optimization.

The calculation type of the evaluation curve (original, linear, sqrt, log, quad, S-Curve) can be selected for this purpose. The lower and upper percentage limit of the gray values can also be truncated by 10%. This hides the gray values in this range.

### Tools – "Color"

This tool is only visible for recordings made with VistaCam.



Setting brightness values for the colors, red, green, blue (RGB)

### Filter – "Intra", "Ceph" and "Pano"

These filters are visible with VistaRay and VistaScan.



Different filters can be used to support the diagnosis.



Noise reduction (with "Intra", "Ceph" and "Pano")



Sharpen image ("Intra", "Ceph", "Pano")



Ceph "1": Optimizing the recording



Ceph "PA": Sharpens the borders between background and foreground in the recording



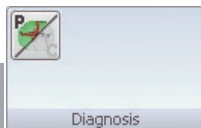
Histogram optimization



Panorama "S": Default setting

### Filter – "Diagnosis"

The "Prophylaxis/Caries View" filter is only visible with VistaProof.



Select and use prophylaxis ("P") or caries ("C"). The caries filter is set as default for VistaProof recordings.

### Help



Call up the Dürre Dental website. Default: [www.duerr.de](http://www.duerr.de)



Call up VistaEasy Help:  
PDF version of the operating instructions



Call up the window with information on the program:  
Product name, program version, manufacturer's information

### Edit recordings

› Click on a miniaturized preview of the recording in the image preview bar.

The full-size version of the recording is shown in the main window.

### Adjusting the dosage equivalence value

Procedure if the bar is red:


Bar is red and low	Increase X-ray dosage or amplification of recording system
Bar is red and high	Decrease X-ray dosage or amplification of the recording system


› Adjust the X-ray dosage in the recording system accordingly.

› Import recording again.

### Use tools and filters

› Use the desired tools and filters on the recording.


› If necessary, click on the  button to undo the last changes made.

› If applicable, click on the  button to load the image in its original status again.

### Configuring device-specific mode

If you always want to use the settings in tools "BCG", "Histogram" and in the filters for recordings with the selected device, these settings can be stored permanently as a mode.

› Make the desired settings in the tools and filters.

› Click on the  button in the Quick Access Toolbar.

The settings are stored and will be used for the next recording with the device.



## 4.6 Sending recordings from VistaEasyView to third-party applications

After the recordings are edited, the recordings to be sent to the third-party application can be chosen.



### CAUTION

The settings for the BCG values, the applied filters, etc., are stored in the recording and, hence, are also transferred to the third-party application. These changes cannot be undone in the third-party application.



The marked recordings are sent to the third-party application as edited and displayed in VistaEasyView using the implemented interface (VistaEasy-TWAIN or VistaEasy).

VistaEasy cannot be closed if there still are recordings in the image preview bar. Recordings cannot be deleted in VistaEasyView either.



### CAUTION


The transferred recordings must be saved in the third-party application. If the recordings are not saved, the data are irrevocably lost!

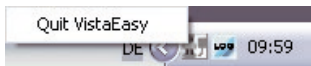
- › Mark desired recordings in the image preview bar using .
- › Click on the  button in the Quick Access Toolbar.  
The recordings are sent to the third-party application and are shown in its program window.
- › Save recordings in the third-party application.  
VistaEasyView is closed automatically, if no recordings are present any longer in the image preview bar after transfer of the recordings.

## 4.7 Closing VistaEasy

VistaEasyView is closed automatically once all recordings are edited and transferred to the third-party application.

If no recordings or jobs are present in VistaEasyView or in VistaEasy Job Management, the program can be closed manually.

- › Use the right mouse button to click on the  icon in the task bar.  
A pop-up menu appears.

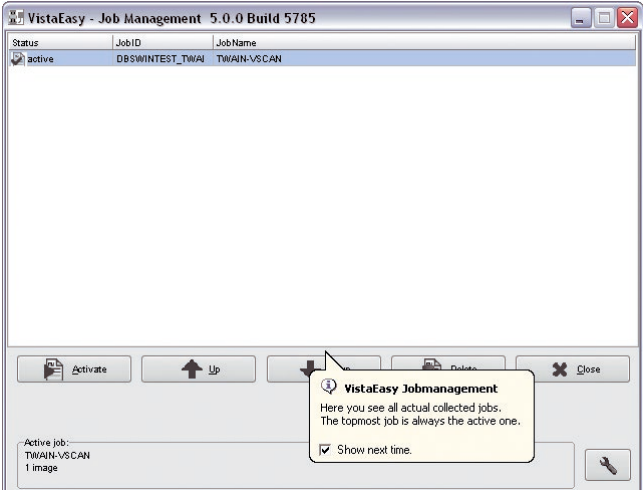


If the pop-up menu is active, you can close VistaEasy. If the pop-up menu is disabled (grayed-out), there are still recordings or jobs being edited. You then have to send these recordings to the third-party application in order to close VistaEasy.

- › Click on the pop-up menu.  
This closes VistaEasy.

# 5 VistaEasy Job Management

An entry (job) is made in the Job Management when starting a recording. Example:



The status window shows a list of active jobs. Detailed information (number of images) is shown in the "Active jobs" area.

Existing jobs can be edited as follows:

- Delete** Delete job
- Activate** Select the job to be edited next.

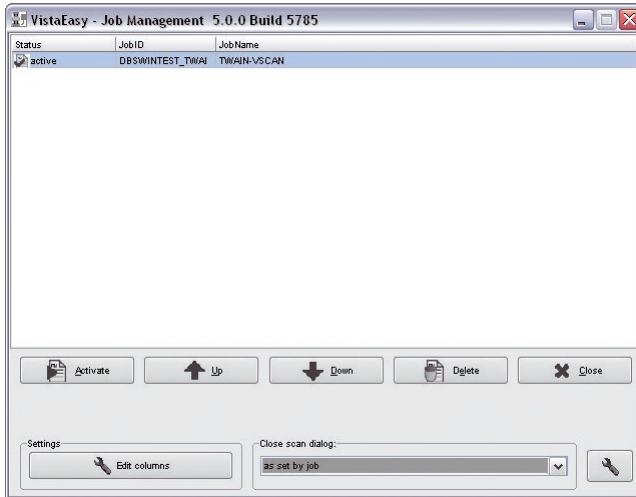
Change editing sequence:

- Up** Move a job up in the list
- Down** Move a job down in the list
- Close** Close job management (only possible if no other job is in the list.)
- Show extended settings (configure job management)

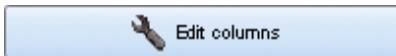
## 5.1 Configuring job management

› Click on the  button.

The "Settings" area and the "Close scan dialog" area are displayed in the lower part of the program window.



### "Settings" area



Adapt the arrangement and content of the columns for job management

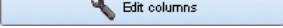
### "Close scan dialog" area

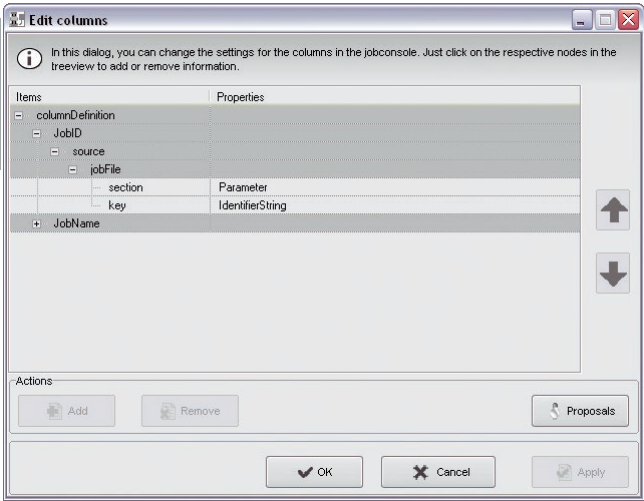
Close the Preview window after ending the scan process.

The following settings can be selected in the list:

- |                             |                                   |
|-----------------------------|-----------------------------------|
| "always manually":          | Window stays open                 |
| "always close immediately": | Window closes automatically       |
| "as defined by job":        | As set in third-party application |

Adapt the arrangement and content of the columns

- Click on the  button.  
The "Edit columns" dialog window appears.



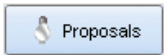
Here, you can arrange or delete and add columns and define column content.



Add column



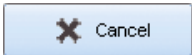
Delete column



Show suggestions





Accept configuration and close dialog window



Discard changes and close dialog window




Accept configuration. Dialog window stays open.

- Configure columns as desired.
- Click on the  or  button to save the configuration.  
The display in VistaEasy Job Management is adapted accordingly.

## 6 Log management

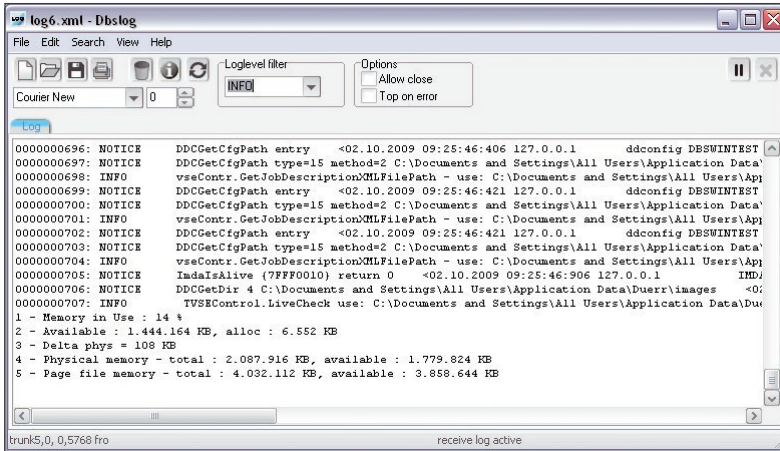
Output of information, warnings and error displays.

VistaEasy creates an icon in the task bar for this: 

### 6.1 Viewing the log file


► Use the right mouse button to double click on the  icon in the task bar.


The dialog box for the log server with the log messages is shown.

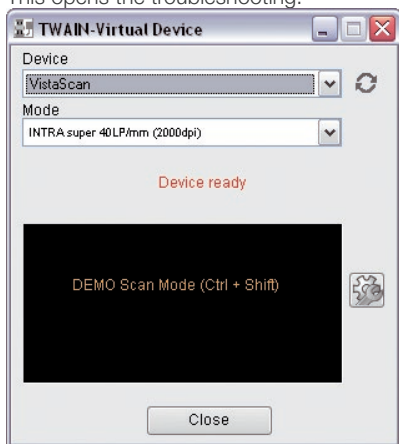


The contents of the window can also be saved as a file.

## 7 Troubleshooting

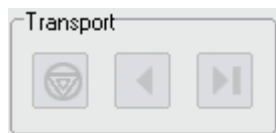
If any problems (e.g. image plate is not ejected fully, x-ray image missing) either before, during or after scanning, the scan process can be ended and a report file created using the  button.

- › Click on the  button in the preview window.  
This opens the troubleshooting.



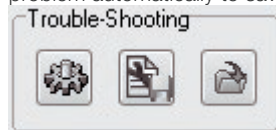
### 7.1 Transport

You can instruct the unit to run forwards or backwards with the buttons in the "Transport" area.



### 7.2 Troubleshooting

Where external network devices are connected, e.g. VistaScan Mini, one can attempt to solve any problem automatically to save a scanner report or to recover lost images.



#### Automatic troubleshooting

The unit attempts to remedy the problem automatically. If this is not successful, inform the technical services.

#### Save Scanner-Report as...

The window contents currently displayed can be saved here.

- › Click on the  button.

The standard "Save as..." Windows menu is shown, in which you can select the storage location and the file name. Three different files can be generated which must then be given different names on saving.

## Image recovery

All scanned images are saved to a temporary directory for a period of two weeks. After two weeks the images are erased.



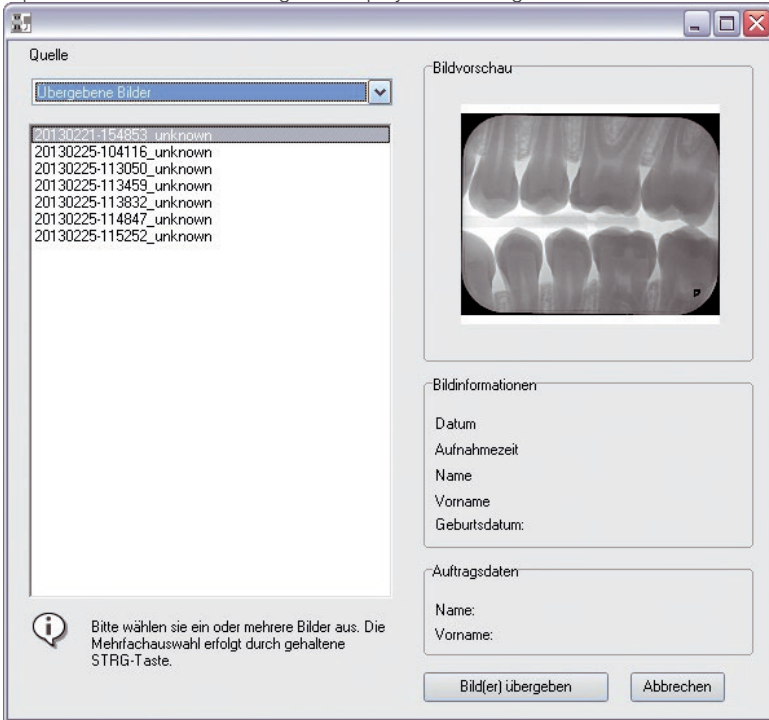
- › Click on the button.

The image recovery window opens.

- › Under "Source", select the "Transferred images" item.

All the images taken in the previous two weeks are displayed in a list on the left side.

A preview of the selected images is displayed on the right side.



- › Mark those images in the list which should be recovered.

- › Click on the "Transfer image(s)" button.

The images look again like a normal scan job.



**Hersteller / Manufacturer:**

DÜRR DENTAL SE

Höfigheimer Str. 17

74321 Bietigheim-Bissingen

Germany

Fon: +49 7142 705-0

[www.duerrdental.com](http://www.duerrdental.com)

[info@duerrdental.com](mailto:info@duerrdental.com)

