

# VistaEasy 5.16



EN

## Installation and Operating Instructions

CE 0297

9000-618-137/02



 **DÜRR  
DENTAL**

2019/10/15



# Inhalt

<b>1 General</b>	4
1.1 Symbols used	4
1.2 Classification	4
1.3 Functional description	4
1.4 Intended purpose	5
1.5 Intended use	5
1.6 Improper use	5
1.7 Side effects	5
1.8 Safety	5
1.9 Notification requirement of serious incidents	5
1.10 Specialist personnel	6
1.11 Storage of the data storage media	6
1.12 Data backup before installation	6
1.13 Effects on the computer	6
1.14 Protection from threats from the Internet	6
1.15 Copyright information	6
1.16 Software license agreement - End User Licensing Agreement (EULA)	6
1.17 System requirements	7
<b>2 Installation</b>	8
2.1 Data backup during an update	8
2.2 Performing the Installation	8
<b>3 Configuration</b>	10
3.1 Starting VistaConfig	10
3.2 Activating VistaEasyView	10
3.3 Configuring edge masking	11
3.4 Selecting order settings	11
3.5 Closing VistaConfig	11
3.6 Using the TWAIN interface (source) in the third-party application	12
3.7 Using the VistaEasy interface in the third-party application	13
<b>4 Application</b>	14
4.1 Starting recordings via third-party applications	14
4.2 Importing recordings (X-ray images)	16
4.3 Importing recordings (video images) with VistaCam / VistaProof	18
4.4 Viewing recordings in VistaEasyView	20
4.5 Editing recordings in VistaEasyView	22
4.6 Sending recordings from VistaEasyView to third-party applications	25
4.7 Exiting VistaEasy	25
<b>5 VistaEasy Job Management</b>	26
5.1 Configuring Job Management	27
<b>6 Log management</b>	29
6.1 Viewing the log file	29
<b>7 Remedying problems</b>	30
7.1 Transport	30
7.2 Troubleshooting	30

# 1 General

## 1.1 Symbols used



Warning

The signal word differentiates between four levels of danger:

**DANGER**

Immediate danger of severe injury or death

**WARNING**

Possible danger of severe injury or death

**CAUTION**

Risk of minor injuries

**NOTICE**

Risk of extensive material/property damage

Note, e.g. specific instructions regarding the efficient use of the unit.



Comply with the Operating Instructions.



CE mark with notified body number



Manufacturer



Medical device



Refer to the accompanying electronic documents.

## 1.2 Classification

Medical product class IIb

FDA Classification (CFR Title 21) II

## 1.3 Functional description

Recording and transfer of images created with the Dürr Dental imaging systems VistaRay, VistaScan and VistaCam. If necessary, these images can be examined and edited by the operator via the VistaEasyView image screen interface prior to transfer to the third-party application. All changes are burned into the image and transferred to the third-party application that has requested the recording(s) via an order.

The third-party application is responsible for further administration and processing of the transferred image.

The transfer to the third-party application is carried out either via the standard TWAIN or via the proprietary VistaEasy interface. The external program must meet the requirements of the VistaEasy interface specification to ensure safe image transfer.

## 1.4 Intended purpose

The DBSWIN and VistaEasy software is an image processing management system that allows dentists to acquire, display, edit, save, print and distribute medical images. The DBSWIN and VistaEasy software runs on compatible, operator-supplied computers and supports specified medical image generation units. VistaEasy is a part of DBSWIN. It supports additional interfaces to third-party software. VistaEasy can be used as a DBSWIN variant as a standalone software with reduced functionality.

## 1.5 Intended use

The software is intended for the viewing and diagnosis of image data in relation to dental issues. Its proper use is documented in the operating instructions of the corresponding image-generating systems. Image-generating systems that can be used with the software include optical video cameras, digital X-ray cameras, image plate scanners, extraoral X-ray units and optical light beam scanners.

The software must only be used by trained, qualified dental personnel (e.g. dentists, specialist consultants or other qualified personnel) for the following tasks:

- Filter optimisation of the display of X-ray images for improved diagnosis
- Acquisition, storage, management, display, analysis and editing of digital/digitised optical video recordings
- Acquisition, storage, management, display, analysis, diagnosis and editing of digital/digitised X-ray images
- Forwarding of images and additional data to external software (third-party software)

## 1.6 Improper use

The software must not be used for the following:

- Performance of measurements on images that are not suitable for this purpose due to the way in which the images were created. The software does not provide a measuring function due to the unavoidable geometric image properties of X-ray images. Here, displayed values are only intended to serve as guide values. This also applies after use of the calibration function.
- Use for contraindicated purposes for the image-generating system. The operating instructions of the image-generating system must be followed here.
- Mammographic applications.

Any other usage or usage beyond this scope is deemed to be improper. The manufacturer accepts no liability for damages resulting from improper usage. In these cases the user/operator will bear the sole risk.

## 1.7 Side effects

At present, no side effects that might permanently impede the function of other programs are known.

## 1.8 Safety

Dürr Dental has developed the software in such a way that dangers are effectively ruled out if the software is used in accordance with its intended use.

Despite this, the following residual risks can remain:

- Personal injury due to incorrect use/misuse
- Personal injury due to malfunction

## 1.9 Notification requirement of serious incidents

The operator/patient is required to report any serious incident that occurs in connection with the device to the manufacturer and to the competent authority of the Member State in which the operator and/or patient is established/resident.

## 1.10 Specialist personnel

Persons using the software must be able to guarantee safe and correct operation based on their training and experience.

- Make sure every operator is trained in the use of the software.
- All installation, resetting, alteration, extension and repair work must be carried out either by Dürr Dental personnel or by a suitably qualified person approved by Dürr Dental.

## 1.11 Storage of the data storage media

According to the manufacturer's instructions, protect from

- Direct magnetic fields (permanent magnet or electromagnet)
- Temperatures outside the permitted range
- Humidity outside the permitted range
- Damage (scratches, breakage, deformation etc.)

## 1.12 Data backup before installation

Before installing the software, we recommend you perform a complete data backup for the software already installed on the computer. A regular system backup is vital! You can request instructions on how to proceed from your system administrator.

## 1.13 Effects on the computer

We accept no liability for any effects on any software already installed on the computer.

## 1.14 Protection from threats from the Internet

The software runs on a computer that can be connected to the Internet. Therefore, the system needs to be protected from threats from the Internet.

- Use antivirus software and update it regularly.
- Look for evidence of possible virus infection and, if applicable, check with the antivirus software and remove the virus.
- Update the computers operating system regularly.
- Perform regular data backups.
- Provide access to computers to authorised operators only, e.g. by means of user name and password.
- Make sure that only trustworthy content is downloaded. Only install software and firmware updates that have been authenticated by the manufacturer.

## 1.15 Copyright information

All names of circuits, processes, names, software programs and units used in this document are protected by copyright.

The Installation and Operating Instructions must not be copied or reprinted, neither in full nor in part, without written authorisation from Dürr Dental.

## 1.16 Software license agreement - End User Licensing Agreement (EULA)

For the current End User Licensing Agreement (EULA), please refer to the DBSWIN installation process.

## 1.17 System requirements

### Hardware and software

The PC and its components (monitor, printer etc.) must be set up in accordance with IEC 60601-1 (EN60601-1) if they are operated within the vicinity of the patients (up to 1.5 m away from the patient examination area).

Depending on the combination with other peripheral equipment (video camera, scanner, intraoral X-ray imaging system), the safety requirements of the PC system may differ. Further information can be found in the user manuals or may be derived from the regulations valid for the country where the system is installed (e.g. MPG for Europe).

### PC



The following information merely states the requirements for the computer system. Even if the stated system requirements are met, correct operation of the Dürr Dental hardware/software can still be disrupted by specific hardware and software features on the customer side. In these cases, Dürr Dental assumes no liability for trouble-free operation of the Dürr Dental hardware/software.

If additional systems are connected to the PC please note that this may change the system requirements. The system requirements of all connected systems need to be taken into account.

CPU:	≥ Intel Pentium IV compatible, 1.4 GHz
RAM:	≥ 1 GB (2 GB recommended)
Operating systems:	Microsoft Windows 7 (Home Premium or higher), SP1 plus update KB3033929, recommended: KB2921916 Microsoft Windows 8.1 (not Windows RT) Microsoft Windows 10 (Pro or higher) Microsoft Windows Server 2016 Microsoft Windows Server 2019
Hard disk:	Workstation (without database) ≥ 50 GB The database memory requirements depend on the number of images taken at the surgery in question. (Camera image: approx. 1 MB, X-ray image: approx. 2 MB - 10 MB)
Drive:	DVD-ROM
Interface:	Ethernet ≥ 100 Mbit
Graphics card:	Resolution ≥ 1024 x 768 Depth of colour 32-bit, 16.7 million colours

## 2 Installation

### 2.1 Data backup during an update



#### CAUTION

It is essential that the data is backed up, since failure of the system can lead to a loss of data. This will also protect you against loss of data due to incorrect operation or destruction (fire, water...) of the system.



#### CAUTION Data loss

All the data generated after the backup is no longer available after the backup has been restored.

- › Before restoring the backup, ensure that the new data has been backed up separately.
- › Import the new data of the backup restoration separately.

#### Directories to be backed up

The following directories need to be backed up:



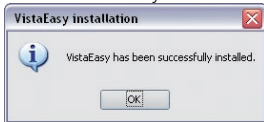
The stated paths refer to a default installation of VistaEasy.

%ProgramFiles%\Duerr	Installation path
%COMMON_APPDATA%\Duerr	Shared data
%APPDATA%\Duerr	User data

We also recommend defining a system restore point in the operating system.

### 2.2 Performing the Installation

- › Close all running programs.
- › Place the DBSWIN DVD-ROM into the DVD drive. The DVD menu will start automatically.  
If the window does not automatically appear, switch to the DVD drive and run the file "CD\_Start.exe".
- › Select the required installation language.
- › Click on the "Drivers" tab.
- › Click "VistaEasy Installation".
- › Click "OK" on the message that then appears.  
You can click "Cancel" to cancel the installation.
- › Read the welcome text and click "Next" to confirm.
- › Read the End User Licensing Agreement (EULA) and tick the "Accept" box if you agree to the terms.
- › Click "Next" to confirm.
- › Check the specified path and change it if necessary.
- › Check the station name and change it if necessary.
- › Click "Install" to start the installation.  
VistaEasy is installed.
- › In the "VistaEasy has been successfully installed" window click "OK" to confirm.





- › If a dialogue pops up asking whether or not the computer should be restarted:  
Click "Yes" to confirm.




After the installation the service technician will need to evaluate the image impressions together with the operator. It may be necessary to adjust the filters in order to further improve the image quality.

# 3 Configuration



**CAUTION**  
Risk of data loss due to incorrect configuration  
Configuration must only be carried out either by Dürr Dental personnel or by a suitably qualified person approved by Dürr Dental.

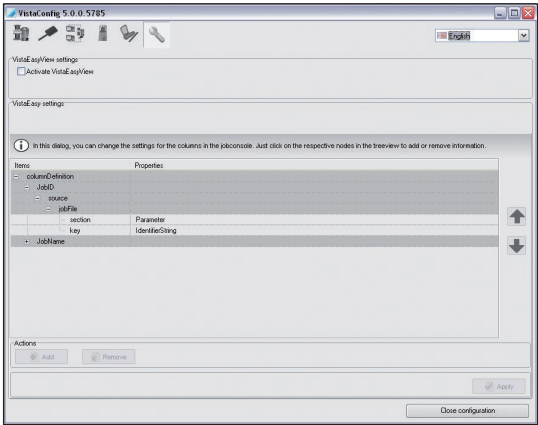
## 3.1 Starting VistaConfig

- To enable VistaEasyView, proceed as follows:
- › Depending on the installed appliance and associated driver, start "VistaScanConfig", "VistaRayConfig", "VistaCamConfig" or "VistaNetConfig" via "Start/All programs/Dürr Dental/VistaConfig".
- The "VistaConfig" program window appears.
-  For information about the configuration of the individual units, please refer to the relevant Installation and Operating Instructions.

## 3.2 Activating VistaEasyView

Before you can use the VistaEasyView display interface, you first need to enable it.  
If you do not enable VistaEasyView, the imported images are sent directly to the third-party application, which means that the images cannot be viewed or edited in VistaEasyView.

- › Click the "VistaEasy configuration" button.




- › In the "VistaEasyView Settings" area, tick the "Enable VistaEasyView" box.

### 3.3 Configuring edge masking

- › Select a grey value (value range: 0 to 65535) under "Edge masking" (must be enabled in the scanning mode).

Edge masking adjusts the white edge of an X-ray image - which is created during the reading process - in line with the colour of the light table. The aim of this is to prevent dazzling in darkened rooms, thus making it easier to perform the diagnosis with the X-ray image. Edge masking can be applied to all Intra formats of VistaScan units.

- › Click  to save the edge masking settings.

The settings need to be saved using this button, as they will otherwise not be adopted.

### 3.4 Selecting order settings

- › Select the following under "Job settings":

<b>Scanning mode selection</b>	As specified in job	If the third-party software sends a scanning mode, this is applied.
	Always manually	The scanning mode always needs to be selected manually.
	Last used	The scanning mode last used is automatically selected.
<b>For jobs where the unit type is not defined</b>	Last used	The unit last used is automatically selected.
	Always default unit	The unit selected under "Default unit" is used.
	Display list of equipment	A list with the available units is always displayed.
<b>Default unit</b>	e.g. VistaScan, ....	A default unit can be selected that is then applied.

### 3.5 Closing VistaConfig

- › Click the "Close configuration" button.
  - › If necessary, click "Yes" to confirm the "Save changes" message.
- This saves the configuration and closes the "VistaConfig" program.

### 3.6 Using the TWAIN interface (source) in the third-party application

Depending on the third-party application used, a TWAIN source is predefined for the device used or is selected directly when importing.

#### TWAIN sources and associated unit

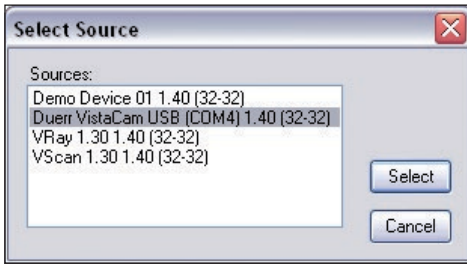
Unit	TWAIN source
VistaScan / VistaScan Combi / VistaScan Plus / VistaScan Perio	VScan 1.40
VistaRay	VRay 1.40
VistaCam Digital / VistaCam Digital (with capture ring) / VistaProof / Vista Proof (with capture ring) / VistaCam CL.iX / VistaCam iX / VistaCam iX HD	TWAIN source is shown along with the individual name of the camera and the occupied COM port.
VistaScan Perio Net / VistaScan Mini	TWAIN source is shown along with the individual name of the scanner.

#### Predefining the TWAIN source

› Open the menu for TWAIN source selection in the third-party application. Example:

File	Edit	Image	Options	View	Help
Open...				O	
Reopen				Shift+R	
Open with external editor					►
Open as					►
Thumbnails				T	
Slideshow...				W	
Batch Conversion/Rename...				B	
Search files...				Ctrl+F	
Rename File...				F2	
Move File...				F7	
Copy File...				F8	
Delete File...				Del	
Save (original folder)				Ctrl+S	
Save as...				S	
Save for Web... (PlugIn)					
Print...				Ctrl+P	
Select TWAIN Source...					
Acquire/Batch scanning...				Ctrl+Shift+A	

- › Select and confirm a TWAIN source in the dialogue. Example:

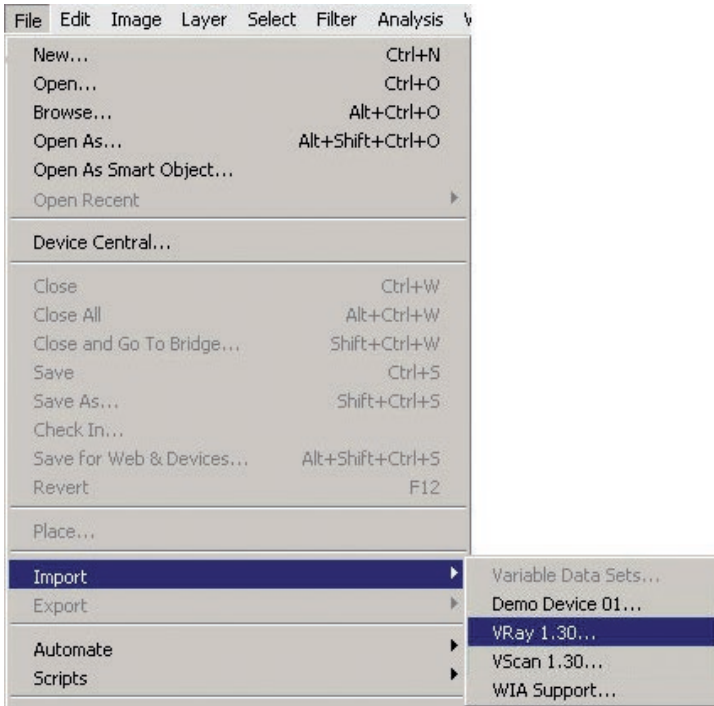


You can now start the import in the third-party application via the corresponding menu.

### Selecting the TWAIN source directly (during import)

In this case, the selection of the TWAIN source immediately starts the image data import process.

- › Open the menu for TWAIN source selection in the third-party application. Example:



## 3.7 Using the VistaEasy interface in the third-party application

The VistaEasy interface may be supported depending on the third-party application being used. Check with the manufacturer of the third-party application or Dürr Dental to find out whether or not the third-party application used supports the VistaEasy interface. If this is the case, the interface must be enabled via a defined button. Refer to the manual of the third-party application for more detailed information.

# 4 Application

## 4.1 Starting recordings via third-party applications

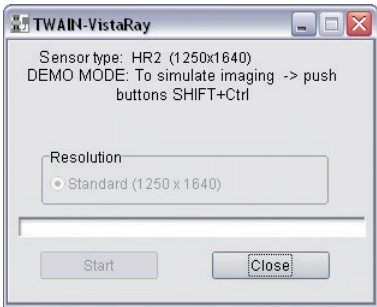


The application listed below is an example!  
Please consult the third-party application manual for information as to whether and how the TWAIN or VistaEasy interface is used in the third-party application.

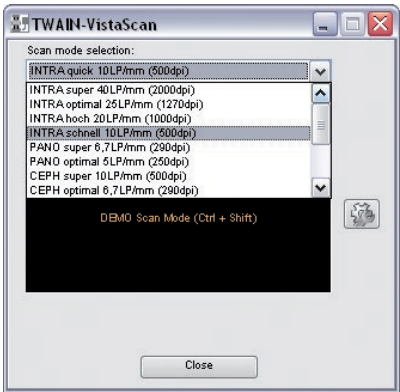
If no TWAIN source can be predefined in the third-party application, the TWAIN source is selected again during every import (refer to the section "Configuration").

- Start the third-party application.
- Select the TWAIN source and start the TWAIN import.  
The device-specific preview window appears.

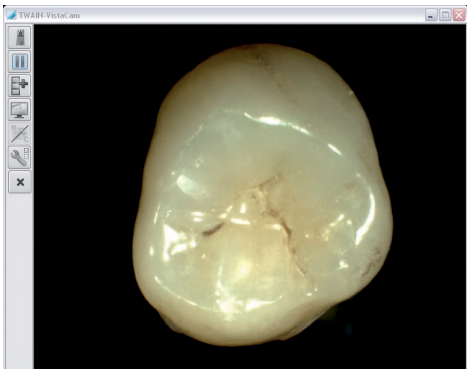
Preview window – examples:



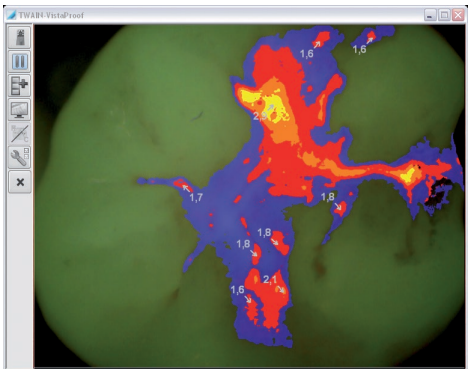
for VistaRay



for VistaScan



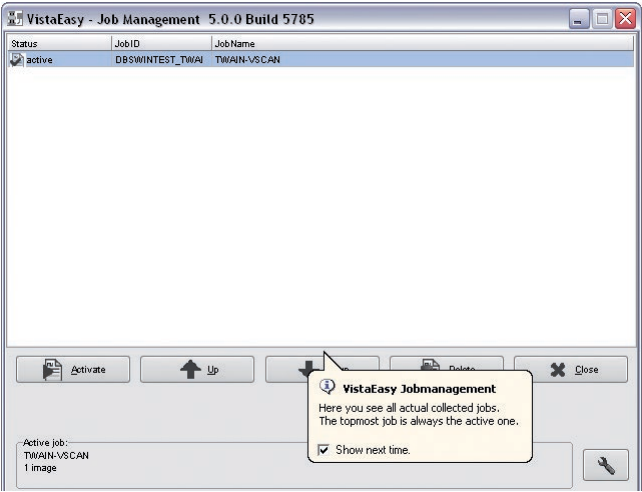
for VistaCam



for VistaProof

The image acquisition that has started appears as a job in VistaEasy Job Management.

*VistaEasy Job Management – example (VistaScan)*



VistaEasy also creates an icon  in the taskbar  next to the Windows clock. Double-clicking this icon opens up VistaEasy Job Management, which displays information for the current job.

For explanations about VistaEasy Job Management: refer to the section "VistaEasy Job Management"

## 4.2 Importing recordings (X-ray images)

### VistaRay

- › VistaRay: Click "Start".

The image is imported. The progress bar in the preview window gradually fills up.


### VistaScan with PC connection

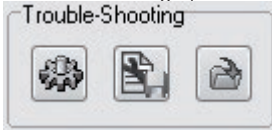
- › VistaScan: Select the scanning mode in the "Scanning mode selection" list in the preview window.  
The scanner is initialised.
- › Insert the image plate or cassette into the scanner.  
The image plate or cassette is drawn in. The progress of the import process is shown in the preview window. After completion of the import the device is ready for use again. The message "Scanner ready" appears in the preview window.


EN

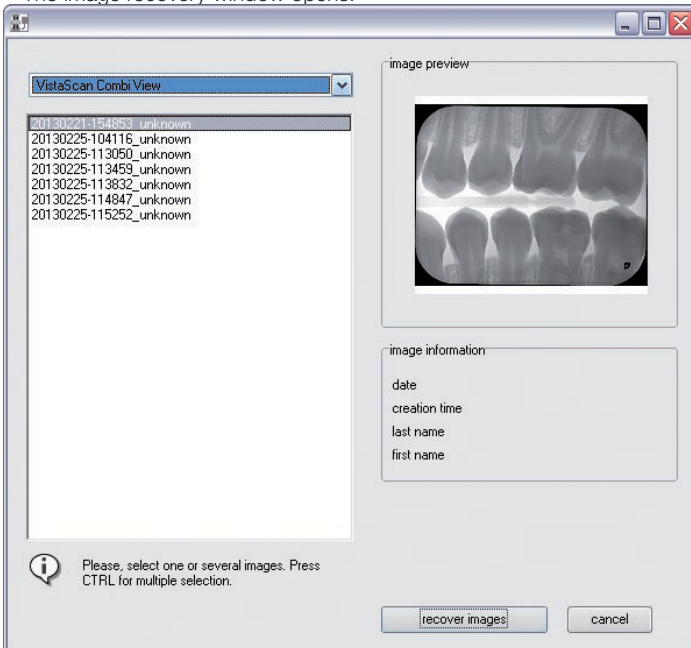
Depending on the configuration, the imported image is loaded into the third-party application or into VistaEasyView, and the preview window is closed. The VistaEasyView window appears only if VistaEasyView is enabled in the configuration (refer to the section "Configuration").

### VistaScan in stand-alone operation

- › Click the button  in the preview window.  
Troubleshooting opens.

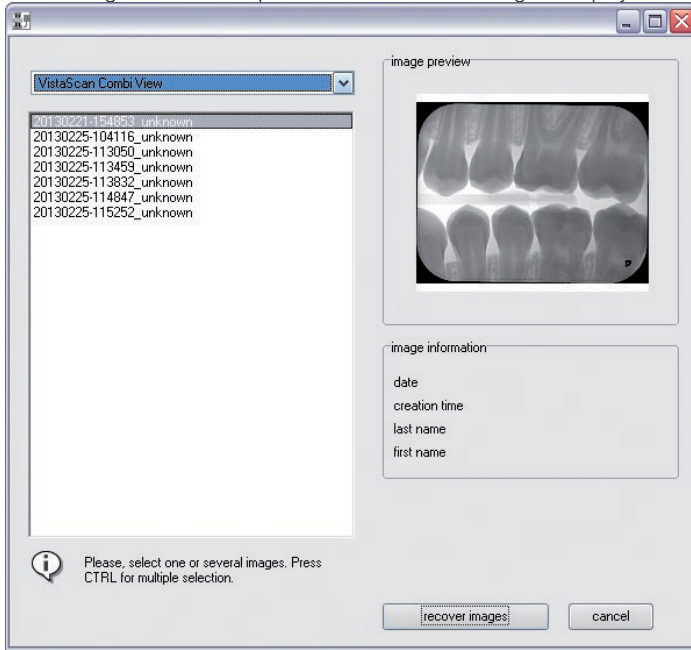


- › Click the  button.  
The image recovery window opens.





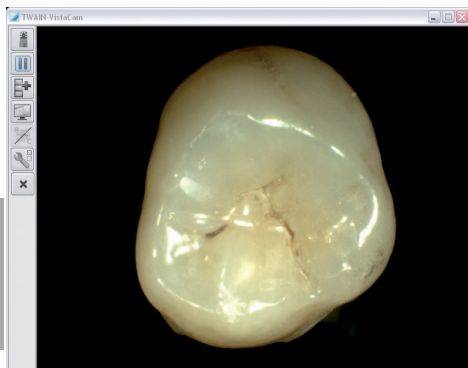
- › Under "Source" choose the entry with the desired scanner.  
All the images on the unit are displayed in a list on the left-hand side.  
On the right-hand side a preview of the selected image is displayed.



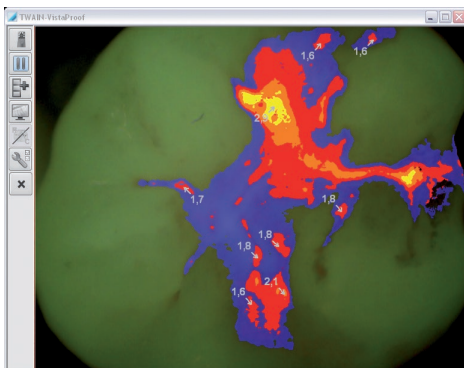
- › Mark the images in the list that are to be transmitted.
- › Click the button "Transmit image(s)".  
The images will appear in the same way as a normal scan job.

### 4.3 Importing recordings (video images) with VistaCam / VistaProof

The current video recording is shown in the preview window.



Preview window for VistaCam



Preview window for VistaProof

The following actions can be performed with the buttons:



Select video source. The last used video source is selected by default.



Camera is in Pause mode (still image).



Camera is in Live mode



Record an individual image. The transmission depends on the operating mode:

- In VistaConfig mode: the recording is shown in the image preview bar of VistaEasyView
- In VistaEasy mode: the recording is transmitted directly to the third-party application. (with enabled VistaEasyView; refer to the section "Configuration")



Selecting full screen mode



Choose and use Prophylaxis/Caries (only available with VistaProof).

The button is only active if a video image is displayed in Pause mode (still image). The Caries view is enabled by default.




Open the camera configuration: "Video settings" and "Enable profile" (only possible with cameras that have a capture ring)




Cancelling the recording and closing the preview window

#### *Configure the camera*

- › Click the  button.
- › Select "Video settings" in the context menu or activate the desired profile.

#### *Select video source*

- › Click the  button.
- › Select the desired video source from the list of registered devices in the context menu.  
The current image from the video source (camera) is displayed in the preview window.

### **Switch between Live mode and Pause mode**

- › If the camera is deactivated (e.g. in the holder or in overheat protection) or it is in Pause mode:

Click the  button.

The camera is activated and switches to Live mode.

- › If the camera is in Live mode:

Click on the  button.


The view switches to Pause mode. The last image recorded is shown as a still image.

This image can be imported and sent to VistaEasyView or to the third-party application.

### **Call up/exit full screen mode**

- › Click the  button.

The video image is shown in full screen mode.

- › To exit full screen mode, click on  in the full screen or open the context menu with the right mouse button and click on "Disable full screen mode".


The video image is shown in the program window of the preview window again.

### **Cancel image**

- › Click the  button.

The image is deleted and cleared from the Job Directory of VistaEasy Job Management. The preview window is closed.

### **Import video image**

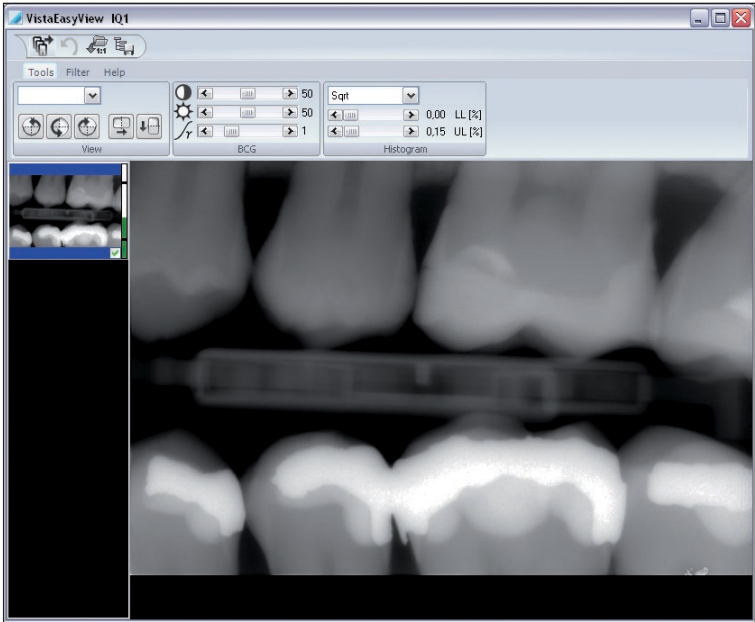
- › Click the  button to import the recording.

Depending on the configuration, the imported recording is loaded into the third-party application or into VistaEasyView. The VistaEasyView window appears only if VistaEasyView is enabled in the configuration (refer to the section "Configuration").

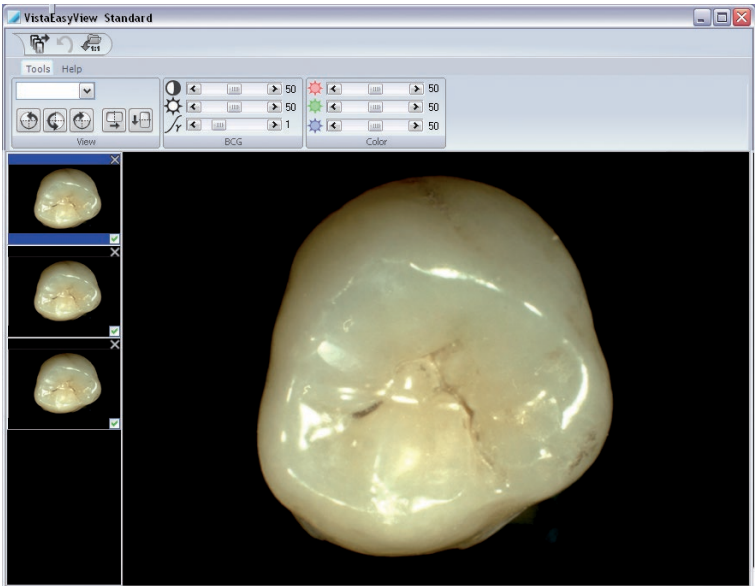
### 4.4 Viewing recordings in VistaEasyView

After the recordings have been transferred to VistaEasyView, one of the following views appears depending on the device used.

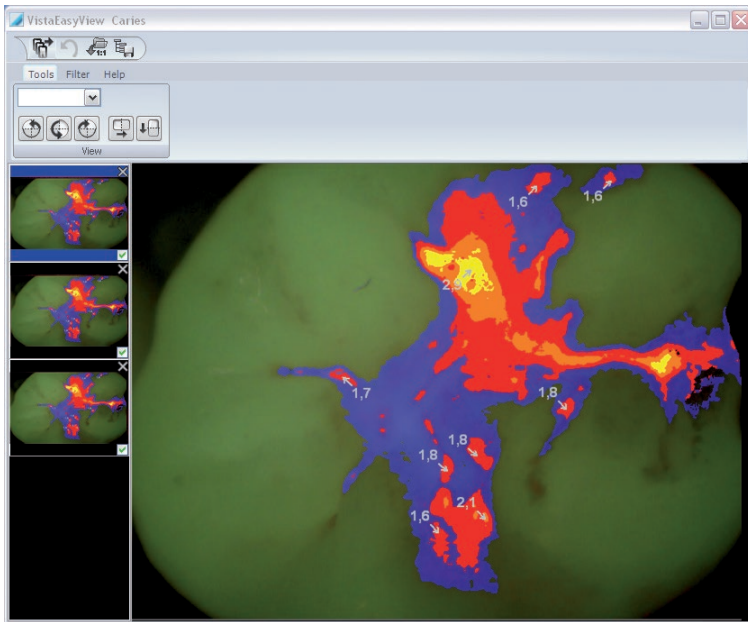
With VistaRay / VistaScan, the following view appears (example):



With VistaCam, the following view appears (example):



With VistaProof, the following view appears (example):



In VistaEasyView, you can edit the recordings and send them to the third-party application. The program interface is divided into various areas.

### Quick Access toolbar



You can manage the imported recordings in the Quick Access toolbar.



**Transfer images:**

Sends the images that are marked with a tick to the third-party application.



**Undo:**

Undoes the most recent step.



**Load original image:**

Loads the original state of the recording.



**Save mode configuration:**

Saves settings (BCG values, filter and histogram optimisation) that have been made.



### NOTICE

The settings that have been made are saved directly in the mode. The saved changes are then always applied when this mode is used.

## Image preview bar

The loaded recordings are shown as thumbnails in the image preview bar and can be marked for transfer.

In the case of recordings with VistaCam and VistaProof, individual recordings can also be deleted in the image preview bar.

### Delete recording (VistaCam, VistaProof)

› Click  in the image preview bar next to the recording to be deleted.

This deletes the recording from the image preview bar.

The dosage equivalence values are also shown on the right, next to the individual recordings in the image preview bar. This value serves as a guide value for the optimum settings of the dosage parameters. If the dosage parameters are set to the correct values, this is indicated by a green bar – if not, this is indicated by a red bar. Here, there is a lower and upper critical limit.

## 4.5 Editing recordings in VistaEasyView

### Tools and filters for editing the recordings

The tools and filters that are required for image processing are visible in VistaEasyView, depending on the device that is connected.

#### Tools – "View"



Increase / Decrease size:

A zoom factor can be chosen via the pull-down menu.



Rotate recording:

The recording can be rotated by 90° to the left/right or by 180°.



Mirror recording:

The recording can be flipped horizontally or vertically.

#### Tools – "BCG" (brightness, contrast, gamma values)

This tool is only visible for recordings made with VistaRay and VistaScan.



Contrast:

The contrast of the recording can be adjusted with the slide control.



Brightness:

The brightness of the recording can be adjusted with the slide control.

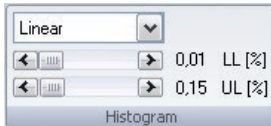


Gamma:

The gamma values of the recording can be adjusted with the slide control.

### Tools – "Histogram"

This tool is only visible for recordings made with VistaRay and VistaScan.

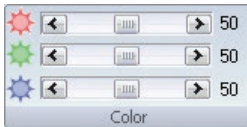


The histogram of grey values can be adjusted with the histogram optimisation.

The calculation of the evaluation curve (Original, Linear, Sqrt, Log, Quad, S-Curve) can be selected for this purpose. In addition, the lower and upper percentage limit of the grey values can also be truncated by 10%. This hides the grey values in this range.

### Tools – "Colour"

This tool is only visible for recordings made with VistaCam.



Setting brightness values for the colours red, green, blue (RGB)

### Filter – "Intra", "Ceph" and "Pano"

These filters are visible with VistaRay and VistaScan.



Different filters can be used to support the diagnosis.



Noise reduction (with "Intra", "Ceph" and "Pano")



Sharpen image ("Intra", "Ceph", "Pano")



Ceph "1": Optimizing the recording



Ceph "PA": Sharpens the borders between background and foreground in the recording



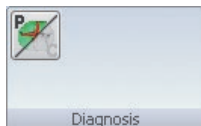
Histogram optimisation



Panorama "S": Default setting

### Filter – "Diagnosis"

The "Prophylaxis/Caries View" filter is only visible with VistaProof.



Select and use Prophylaxis ("P") or Caries ("C"). The caries filter is selected by default for VistaProof recordings.

### Help



Calls up the Dürr Dental website. Default: [www.duerr.de](http://www.duerr.de)



Calls up VistaEasy Help:  
PDF version of these operating instructions



Calls up window with information about the program:  
Product name, program version, manufacturer's information

### Editing recordings

- › Click on a thumbnail of the recording in the image preview bar.  
The full-size version of the recording is shown in the main window.



### Adjusting the dosage equivalence value

Procedure if the bar is red:

Bar red and low	Slightly increase X-ray dosage or amplification of recording system
Bar red and high	Decrease X-ray dosage or amplification of the recording system


- › Adjust the X-ray dosage in the recording system accordingly.
- › Re-import recording.

### Use tools and filters

- › Apply the desired tools and filters to the recording.
- › If necessary, click the  button to undo the last changes made.
- › If necessary, click the  button to re-load the image in its original state.

### Configuring device-specific mode

If you always want to use the settings in the tools "BCG", "Histogram" and in the filters for recordings with the selected device, these settings can be stored permanently as a mode.

- › Selecting the desired settings in the tools and filters.
- › Click on the  button in the Quick Access Toolbar.  
The settings are stored and will be applied for the next recording with the device.



## 4.6 Sending recordings from VistaEasyView to third-party applications

Once you have finished editing the recordings, you can choose which recordings are to be sent to the third-party application.



### CAUTION



The chosen settings for the BCG values, applied filters etc. are stored in the recording and are thus also transferred to the third-party application. These changes cannot be undone in the third-party application.

The marked recordings are sent via the interface used (VistaEasy-TWAIN or VistaEasy) to the third-party application in the state in which they were edited and displayed in VistaEasyView. VistaEasy cannot be closed if there still are recordings in the image preview bar. Similarly, recordings cannot be deleted in VistaEasyView.



### CAUTION


The transferred recordings must be saved in the third-party application. If the recordings are not saved, the data will be permanently lost.

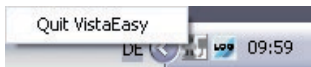
- › Mark desired recordings in the image preview bar using .
- › Click on the  button in the Quick Access Toolbar.  
The recordings are sent to the third-party application, where they are displayed in the program window.
- › Save the recordings in the third-party application.  
VistaEasyView is closed automatically if no more recordings are present in the image preview bar after transfer of the recordings.

## 4.7 Exiting VistaEasy

VistaEasyView is closed automatically once all recordings have been edited and transferred to the third-party application.

If no recordings or jobs exist in VistaEasyView or VistaEasy Job Management, the program can be manually closed.

- › Use the right mouse key to click the icon  in the taskbar.  
A pop-up menu appears.

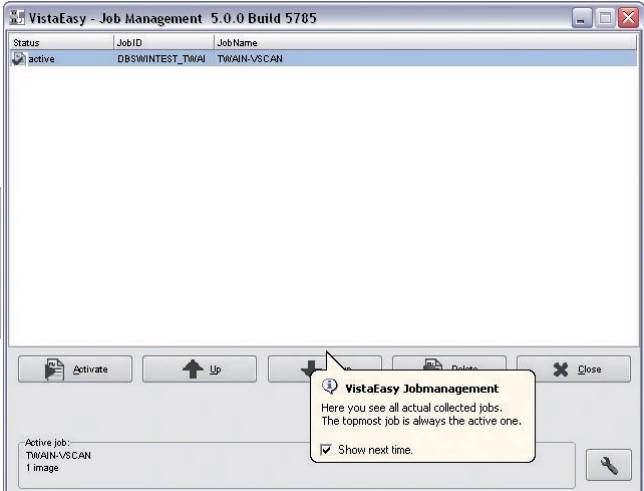


If the pop-up menu is enabled then you can end VistaEasy. If the pop-up menu is disabled (greyed out) then there are still recordings or jobs being processed. You must first send these recordings to the third-party application before you can close VistaEasy.

- › Click on the pop-up menu.  
VistaEasy is closed.



# 5 VistaEasy Job Management

An entry is made in the Job Management when a recording is started. Example:







The status window shows a list of the active jobs. Detailed information (number of images) is shown in the "Active jobs" area.

Waiting jobs can be processed as follows:

-  **Delete** Delete job
-  **Activate** Select the job to be edited next

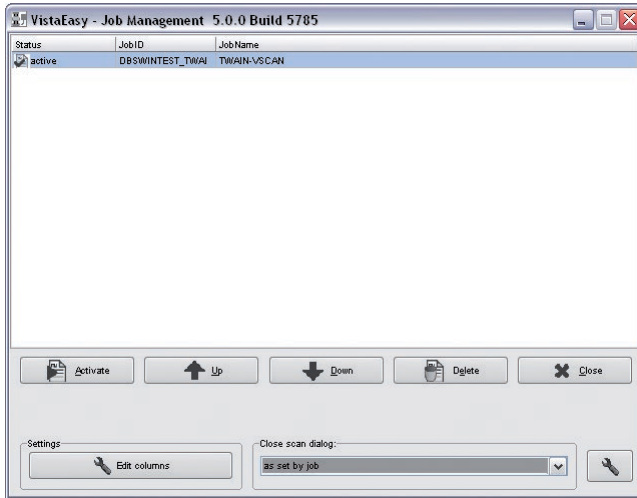
Change editing sequence:

-  **Up** Move a job up in the list
-  **Down** Move a job down in the list
-  **Close** Close job management  
(only possible if no more jobs are in the list)
-  Display advanced settings (configure Job Management)

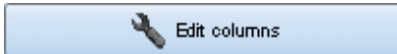
## 5.1 Configuring Job Management

› Click the  button.

The "Settings" and "Close scan dialogue" areas are displayed in the lower part of the program window.



### "Settings" area



Adapts the layout and content of the columns for Job Management

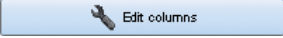
### "Close scan dialogue" area

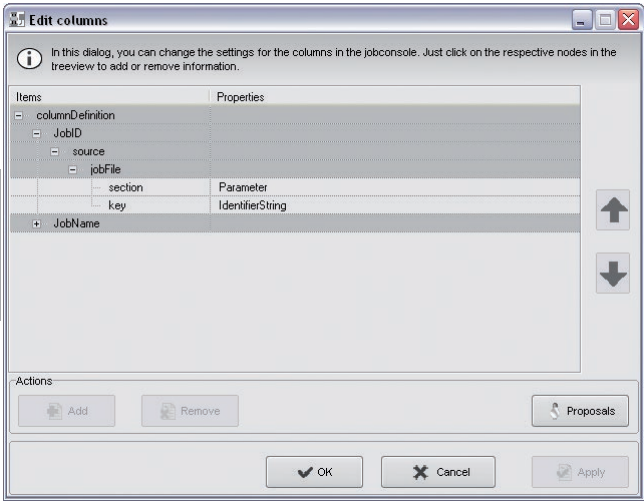
Closes the Preview window after the scan process has been finished.

The following settings can be selected from the list:



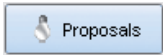



- |                            |   |
|----------------------------|---|
| "Always manually"          | Window stays open                         |
| "Always close immediately" | Window closes automatically               |
| "As defined in job"        | As defined in the third-party application |



Changing the layout and content of the columns

- Click the  button.  
The "Edit columns" dialogue window appears.




Here you can arrange or delete/add columns and define column content.

- |  |   |
|--|---|
|    | Add column  |
|    | Delete column                                     |
|    | Show suggestions                                  |
|   | Accept configuration and close dialogue window    |
|  | Discard changes and close dialogue window         |
|  | Accept configuration. Dialogue window stays open. |

- Configure the columns as desired.
- Click the button  or  to save the configuration.  
The display in VistaEasy Job Management is adapted accordingly.

## 6 Log management

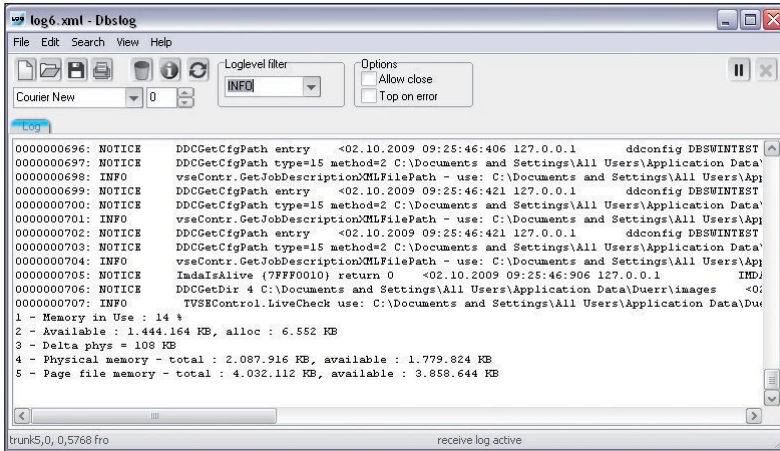
Output of information, warnings and error displays.

VistaEasy creates an icon in the taskbar for this: 

### 6.1 Viewing the log file

► Use the right mouse key to double-click the  icon in the taskbar.

The dialogue box for the log server appears with the log messages.



The contents of the window can also be saved as a file.


## 7 Remediying problems

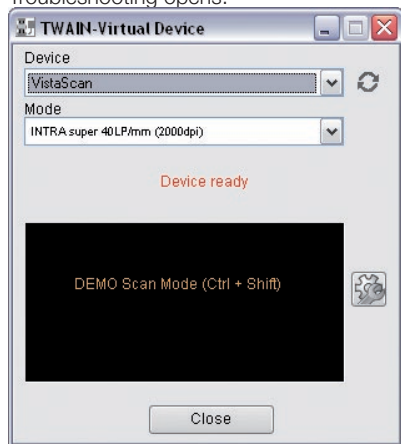
If any problems (e.g. image plate is not fully transported out, X-ray images missing) either before, during or after scanning, then the scanning process can be terminated and troubleshooting started via the



button.



- › Click the button  in the preview window. Troubleshooting opens.



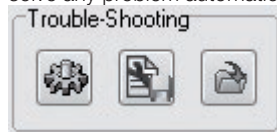
### 7.1 Transport

You can instruct the unit to run forwards or backwards with the buttons in the "Transport" area.



### 7.2 Troubleshooting

Where external network devices are connected, e.g. with the VistaScan Mini, it is possible to attempt to solve any problem automatically, save a scanner report or recover lost images.



#### Automatic troubleshooting

The unit attempts to solve the problem automatically. If this is unsuccessful inform customer support.

#### Save Scanner Report As...

The contents currently displayed in the window can be saved here.




- › Click the  button.

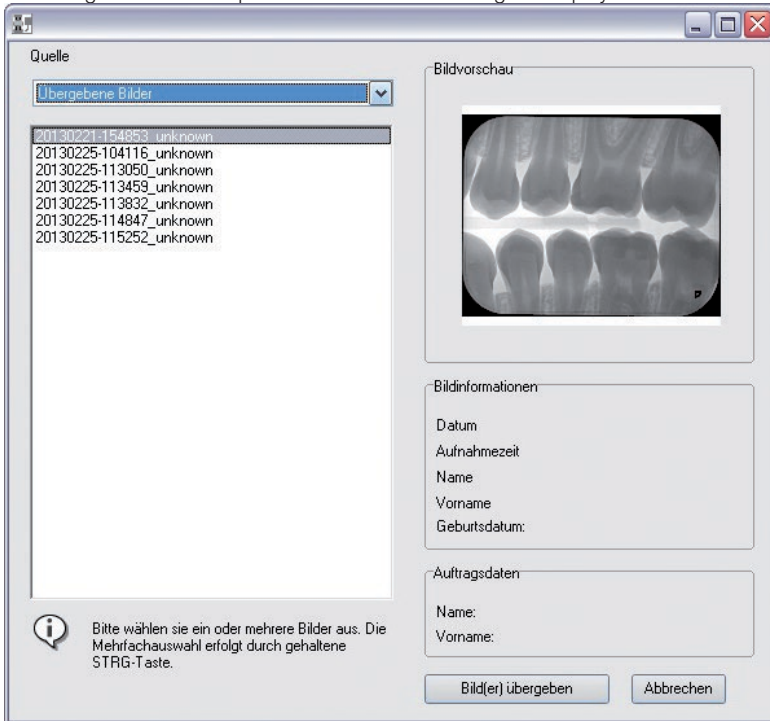
The standard Windows menu "Save As..." appears, where you can select the storage location and the file name. Three different files can be generated, which must then be given different names when they are saved.

#### Image recovery

All scanned images are saved to a temporary directory for a period of two weeks. After two weeks the images are erased.



- › Click the  button.  
The image recovery window opens.
- › Under "Source" select the option "Transmitted images".  
All the images taken in the last two weeks will be displayed in a list on the left-hand side.  
On the right-hand side a preview of the selected image is displayed.



- › Mark the images in the list that are to be recovered.
- › Click the button "Transmit image(s)".  
The images will appear in the same way as a normal scan job.



**Hersteller / Manufacturer:**

DÜRR DENTAL SE

Höfigheimer Str. 17

74321 Bietigheim-Bissingen

Germany

Fon: +49 7142 705-0

[www.duerrdental.com](http://www.duerrdental.com)

[info@duerrdental.com](mailto:info@duerrdental.com)

