

DBSWIN Version 5



EN

Installation / Update

CE 0297

9000-618-43/02



 **DÜRR
DENTAL**

2017/04/05SE

Contents



Important information

1. Notes	4
1.1 Minimum system requirements	4



Installation

2. First steps	5
3. Single workstation installation	6
4. Network installation	7
4.1 Important information - prior to installation	7
4.2 Example layout of the installation structure	7
4.3 Preparation for installation	7
4.4 Installation of the database (server)	8
4.5 Installation of DBSWIN (clients)	9
5. DBSWIN - Update	11
6. DBSWIN - Central activation	12
6.1 Transmission of the registration data	12
6.2 Enter the activation code centrally	13
6.3 Make local settings	13



Important information

1. Notes



The following information concerning the installation of DBSWIN is supplementary to the DBSWIN manual.

It is important to follow the instructions in the DBSWIN manual (order number 2100-725-91/..). This contains further important information on how to use, install, configure and operate the system.

1.1 Minimum system requirements



For current minimum system requirements, see minimum requirements on imaging computer systems, order no.: 9000-618-148/....



Installation

2. First steps



You must have administrator rights in order to install and configure DBSWIN. If necessary, contact your IT expert.

- Close all programs which are currently running.
- Place the DBSWIN DVD ROM in the DVD drive. The DVD menu will start automatically. If the window does not automatically appear, select the DVD drive in "My Computer" and start the "CD_Start.exe" file.
- Select the required installation language.
- Click on "DBSWIN Installation".
- Click on "OK".
- Read the information and follow the instructions.
- Click on "Continue".
- Read the End User Licensing Agreement (EULA).
- Click the "Accept" checkbox to enter a tick (checkmark) to continue.
- Click on "Continue".



3. Single workstation installation

Installation variants

- › Click on "Database and DBSWIN installation".



DBSWIN, the server service and the SQL database will be installed. Here the computer serves as both client and server at the same time.

- › Select "Single-workstation" under "Installation type".
- › Accept or modify the (local) database path.
- › Click on "Continue".
- › Check/Change surgery name.
- › Click on "Continue".

Prepare for installation

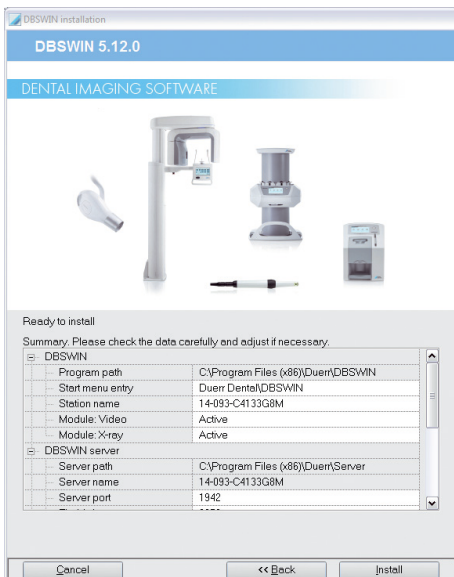
- › Check all selected settings.



Individual modules can be enabled or disabled at any time under DBSWIN -> Module. All modules are installed together at the same time during the installation. However, disabled modules are not displayed when using DBSWIN.

- › Click on "Install".

The setup program will now run automatically and install the individual components.

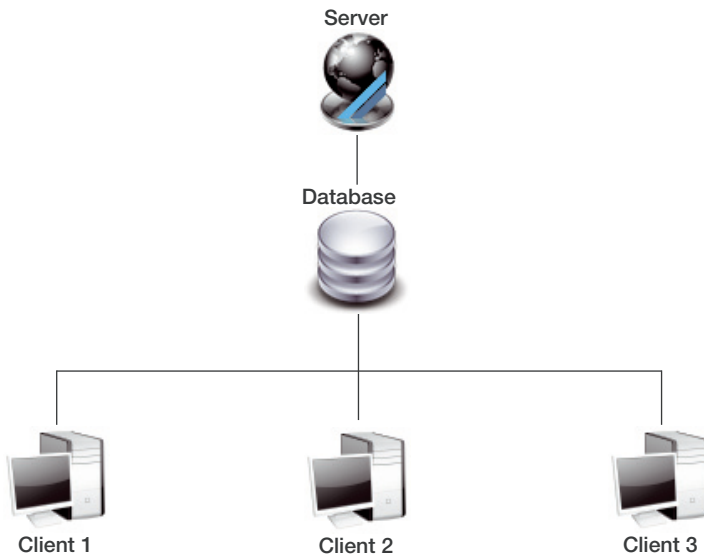


4. Network installation

4.1 Important information - prior to installation

- Your server must have a drive with sufficient partition size available. We strongly recommend the NTFS file system.
- DBSWIN is a client/server database application. For installation, the database drives must be identically "mapped" on all workstations or entered in the database path using UNC paths.

4.2 Example layout of the installation structure



1st step: Database installation (Server)

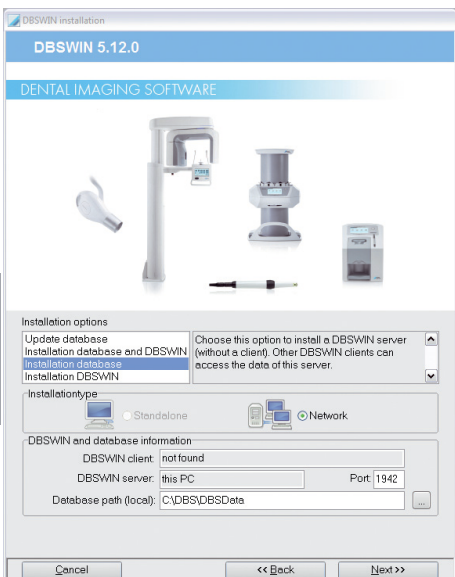
For each client to be able to access the SQL database it must be installed on a server. The SQL database and the server service must be installed on the common server drive before installing the clients.

2nd step: DBSWIN installation (Clients)

The application software (i.e. DBSWIN) will be installed on the local drive of the client. The SQL database on the server will be linked to the application program during the installation.

4.3 Preparation for installation

- The common server drive is displayed on all clients and the server itself. The same drive path must be available (e.g. Z:) there.
- The ports used for the installation must be released in the firewall settings (standard ports: 1942, 3052).



4.4 Installation of the database (server)

The installation must be carried out on the server!

Installation variants

- > Click on "Database installation".
- > Enter the (local) database path.



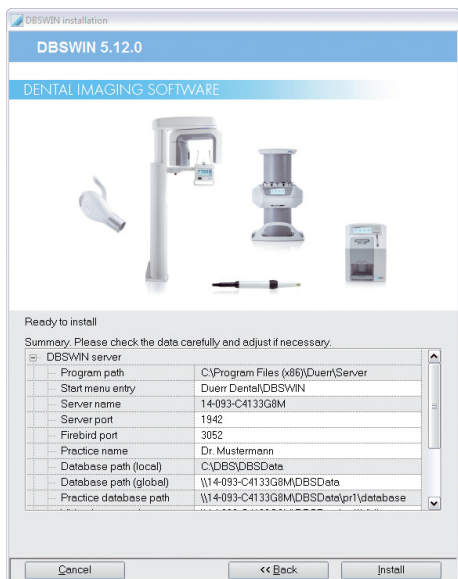
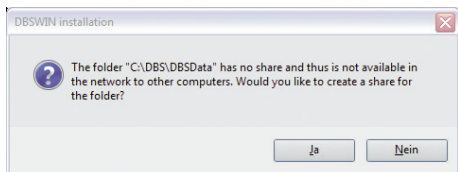
This indicates where the SQL database is physically stored from the (local) server perspective.

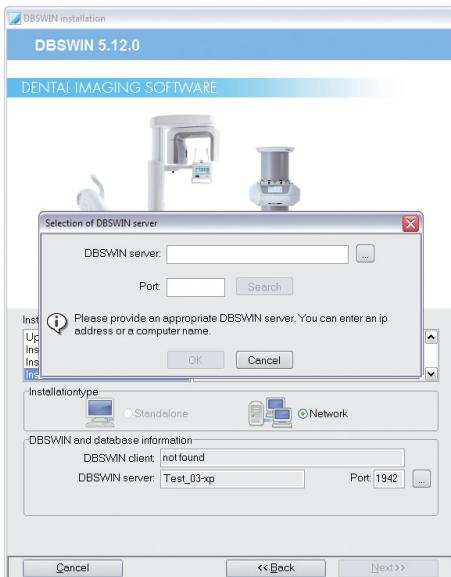
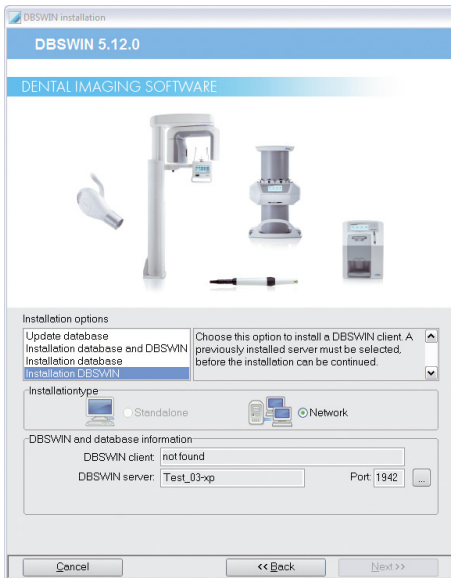
- > Click on "Continue".
- > Confirm the message with "Yes".
- > The "DBSData" directory must be released in the network for all users with full access.
- > Click on "Continue".
- > Enter the surgery name and click on "Continue".

Prepare for installation

- > Check all selected settings.
- > Click on "Install".

The setup program will now run automatically and install the individual components.





4.5 Installation of DBSWIN (clients)

The installation must be carried out separately on the clients!

Installation variants

- Click on "Installation Client".



DBSWIN will be installed on the client.

- Click on the button with the three dots.
- Specify the DBSWIN server.

The following methods are available for this:

Enter the IP address and (optional) port directly

Enter the IP address and port of the server and click on "Find". The server will be searched. When the server has been found, confirm it.



The IP address of the server can be requested using the entry prompt of the server and the "C:\>ipconfig" command.

Select the server from a list

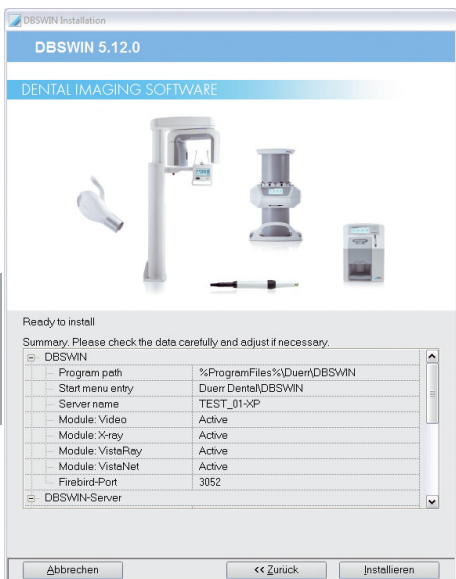
Click the button with the three dots and select the server from the list. There is no guarantee that the server will be found in this list.

- Click on "OK".



If the server has been selected from a list, the "Search" button also needs to be clicked.

- Click on "OK".
- Click on "Continue".



Prepare for installation

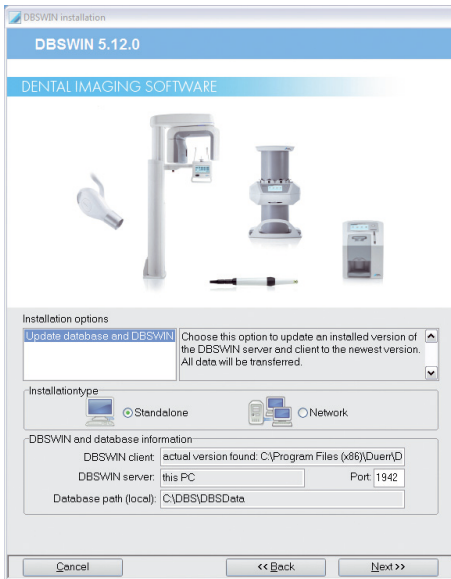
> Check all selected settings.



Individual modules can be enabled or disabled at any time under DBSWIN -> Module. All modules are installed together at the same time during the installation. However, disabled modules are not displayed when using DBSWIN.

> Click on "Install".

The setup program will now run automatically and install the individual components.



5. DBSWIN - Update

The DBSWIN software installed on the PC is updated during the update process. The update also includes new and improved program functions.



An intermediate update to DBSWIN 5 must always be performed before any update/upgrade to DBSWIN 4.5.3. The installation packet can be downloaded at www.duerrdental.net.

Installation variants

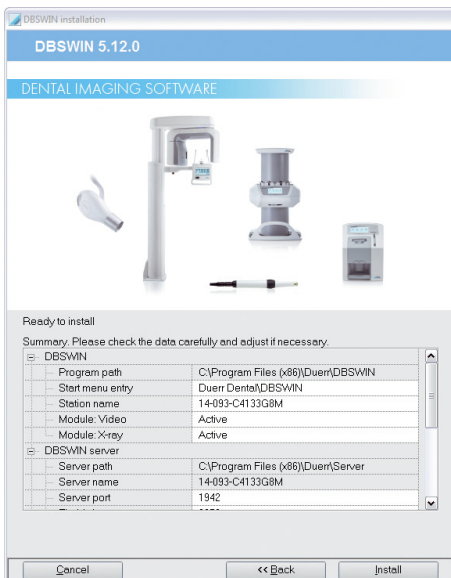


The server must be updated first. Only then can all clients be updated.

- > Close all clients.
- > Select the required update.
- > Click on "Continue".



The database paths are transferred automatically. These do not need to be changed.



Prepare for installation

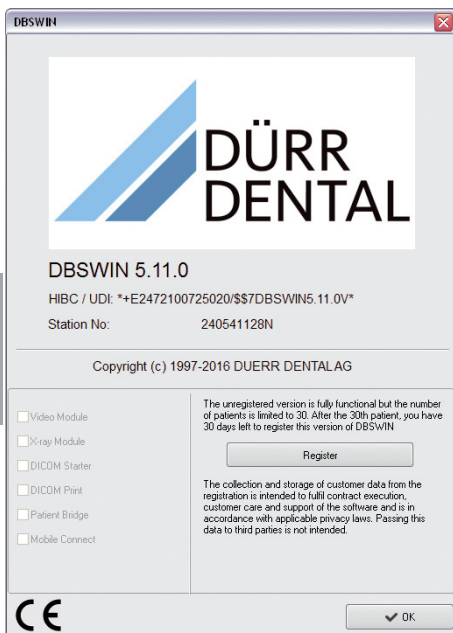
- > Check all selected settings.



Individual modules can be enabled or disabled at any time under DBSWIN -> Module. All modules are installed together at the same time during the installation. However, disabled modules are not displayed when using DBSWIN.

- > Click on "Install".

The setup program will now run automatically and install the individual components.



6. DBSWIN - Central activation

6.1 Transmission of the registration data

To activate DBSWIN centrally, the registration data needs to be sent to Dürr Dental first.



Additional costs apply for the registration. The prices can be found in the latest Dürr Dental price list or ask your dental dealer. Without this activation a maximum number of 30 patients can be stored in the database with the full software functionality. After storing the 30th patient, there will be 30 days left for testing DBSWIN.

- Open DBSWIN.
- Click on "Login".
- Activation window starts automatically. The activation window can also be opened manually in the "Help" menu under the menu item "About DBSWIN".
- Click on "Register".
- Enter the addresses and serial numbers of the appliances in the top field of the registration window.
- Select the modules to be activated in the bottom field.
- Send the registration to Dürr Dental by telephone, fax, e-mail or electronically.



For registration by telephone, keep the data on the order form and the "Station no." ready to hand. Enter the workstation number in the "System" field. When registering by fax, the order form needs to be filled in, printed out and sent by fax to the stated fax number. For registration by e-mail you will need to export the order form as an XML file and attach it to the e-mail. An Internet connection is required for electronic registration. Access data may be required for an Internet connection via a proxy server.

DÜRR DENTAL SE
Höpfigheimer Str. 17
74321 Bietigheim-Bissingen
Germany
Tel: +49 7142 705-0
www.duerrdental.com
info@duerrdental.com

